

MT1-MMP antibody



Catalog Number: 112881

Product name

MT1-MMP antibody

ELISA, WB, IF

Dilutions

Recommended Dilution:

WB: 1:500-1:5000

IF: 1:10-1:100

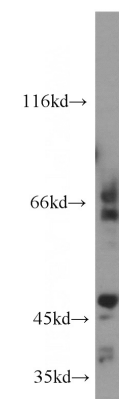
Specificity

Human, Mouse, Rat, Zebrafish; other species not tested.

Validations

Antibody description

MT1-MMP Rabbit Polyclonal antibody. Positive WB detected in HepG2 cells, A549 cells, COLO 320 cells, human colon tissue. Positive IF detected in COLO 320 cells. Observed molecular weight by Western-blot: 66 kDa, 45-50 kDa



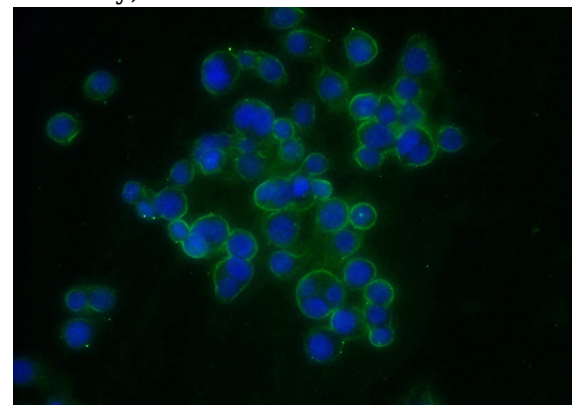
Preparation

This antibody was obtained by immunization of MT1-MMP recombinant protein (Accession Number: NM_004995). Purification method: Antigen affinity purified.

HepG2 cells were subjected to SDS PAGE followed by western blot with Catalog No:112881(MMP14 antibody) at dilution of 1:500

Formulation

PBS with 0.02% sodium azide and 50% glycerol pH 7.3.



Storage

Store at -20°C. DO NOT ALIQUOT

Clonality

Polyclonal

Ig Type

Rabbit IgG

Immunofluorescent analysis of COLO 320 cells using Catalog No:112881(MMP14 Antibody) at dilution of 1:25 and Alexa Fluor 488-conjugated AffiniPure Goat Anti-Rabbit IgG(H+L)

Applications