

# MSX1 antibody



Catalog Number: 112879

## Product name

MSX1 antibody

## Specificity

Human, Mouse, Rat; other species not tested.

## Antibody description

MSX1 Rabbit Polyclonal antibody. Positive WB detected in mouse skeletal muscle tissue, rat skeletal muscle tissue. Observed molecular weight by Western-blot: 31 kDa

## Preparation

This antibody was obtained by immunization of MSX1 recombinant protein (Accession Number: NM\_002448). Purification method: Antigen affinity purified.

## Formulation

PBS with 0.1% sodium azide and 50% glycerol pH 7.3.

## Storage

Store at -20°C. DO NOT ALIQUOT

## Clonality

Polyclonal

## Ig Type

Rabbit IgG

## Applications

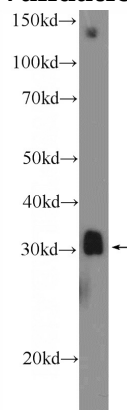
ELISA, WB

## Dilutions

Recommended Dilution:

WB: 1:500-1:5000

## Validations



mouse skeletal muscle tissue were subjected to SDS PAGE followed by western blot with Catalog No:112879(MSX1 Antibody) at dilution of 1:1000