

MSRB2 antibody

Catalog Number: 112876

Product name

MSRB2 antibody

WB: 1:500-1:5000

IHC: 1:20-1:200

Immunogen

[Human MSRB2 Recombinant protein \(GST tag\)](#)

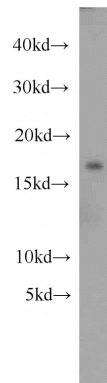
Validations

Specificity

human, mouse, rat; other species not tested.

Antibody description

MSRB2 Rabbit Polyclonal antibody. Positive WB detected in mouse heart tissue, human heart tissue. Positive IHC detected in human kidney. Observed molecular weight by Western-blot: 19kd



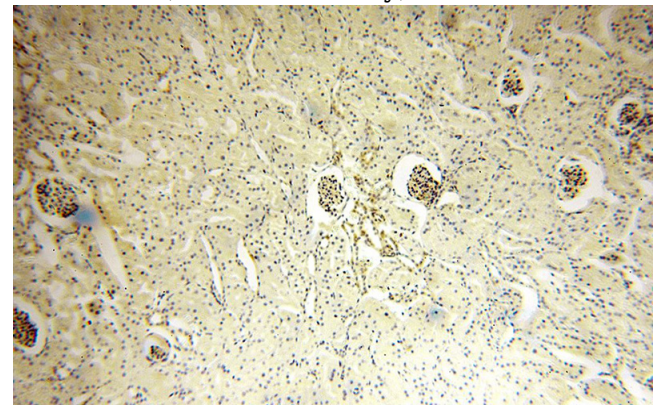
Preparation

This antibody was obtained by immunization of MSRB2 recombinant protein (Accession Number: NM_012228). Purification method: Antigen affinity purified.

mouse heart tissue were subjected to SDS PAGE followed by western blot with Catalog No:112876(MSRB2 antibody) at dilution of 1:1000

Formulation

PBS with 0.02% sodium azide and 50% glycerol pH 7.3.



Storage

Store at -20°C. DO NOT ALIQUOT

Clonality

Polyclonal

Ig Type

Rabbit IgG

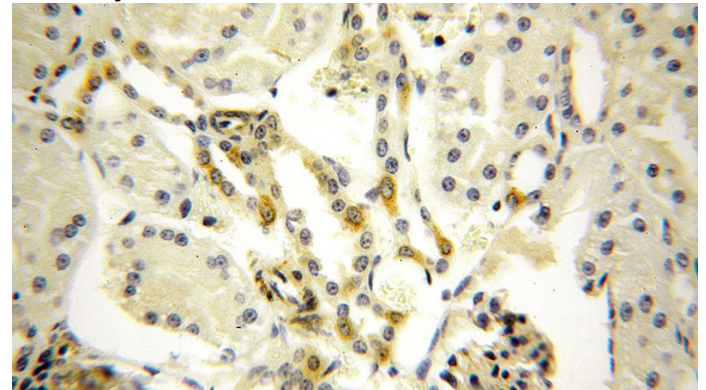
Applications

ELISA, WB, IHC

Dilutions

Recommended Dilution:

Immunohistochemical of paraffin-embedded human kidney using Catalog No:112876(MSRB2 antibody) at dilution of 1:100 (under 10x lens)



Immunohistochemical of paraffin-embedded human kidney using Catalog No:112876(MSRB2

MSRB2 antibody



Catalog Number: 112876

antibody) at dilution of 1:100 (under 40x lens)