

MSL3 antibody

Catalog Number: 112873

Product name

MSL3 antibody

Specificity

Human,Mouse,Rat; other species not tested.

Antibody description

MSL3 Rabbit Polyclonal antibody. Positive WB detected in mouse skeletal muscle tissue, human stomach tissue. Observed molecular weight by Western-blot: 60 kDa

Preparation

This antibody was obtained by immunization of MSL3 recombinant protein (Accession Number: NM_078629). Purification method: Antigen affinity purified.

Formulation

PBS with 0.1% sodium azide and 50% glycerol pH 7.3.

Storage

Store at -20°C. DO NOT ALIQUOT

Clonality

Polyclonal

Ig Type

Rabbit IgG

Applications

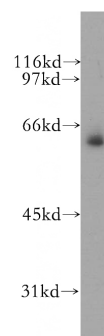
ELISA, WB

Dilutions

Recommended Dilution:

WB: 1:500-1:5000

Validations



mouse skeletal muscle tissue were subjected to SDS PAGE followed by western blot with Catalog No:112873(MSL3 antibody) at dilution of 1:500