

MSH6 antibody

Catalog Number: 112869

Product name

MSH6 antibody

Specificity

Human, Mouse, Rat; other species not tested.

Antibody description

MSH6 Rabbit Polyclonal antibody. Positive IF detected in Hela cells. Positive IHC detected in human spleen tissue, human colon tissue, human heart tissue, human kidney tissue, human ovary tissue, human testis tissue. Positive WB detected in HEK-293 cells, COLO 320 cells, HeLa cells. Positive IP detected in HEK-293 cells. Observed molecular weight by Western-blot: 150-160 kDa

Preparation

This antibody was obtained by immunization of MSH6 recombinant protein (Accession Number: NM_000179). Purification method: Antigen affinity purified.

Formulation

PBS with 0.02% sodium azide and 50% glycerol pH 7.3.

Storage

Store at -20°C. DO NOT ALIQUOT

Clonality

Polyclonal

Ig Type

Rabbit IgG

Applications

ELISA, WB, IHC, IF, IP

Dilutions

Recommended Dilution:

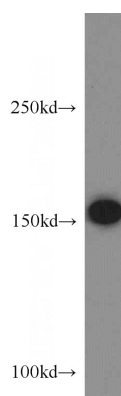
WB: 1:500-1:5000

IP: 1:200-1:2000

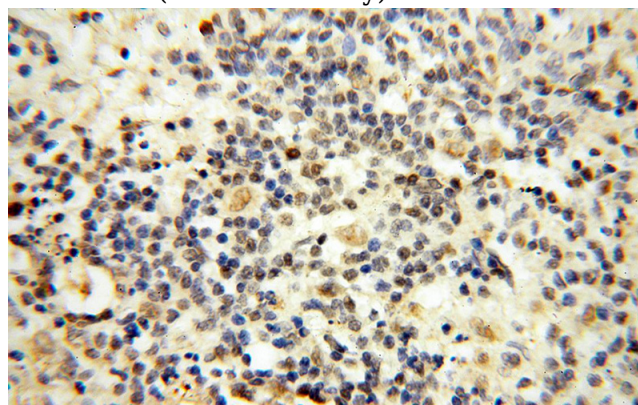
IHC: 1:20-1:200

IF: 1:10-1:100

Validations



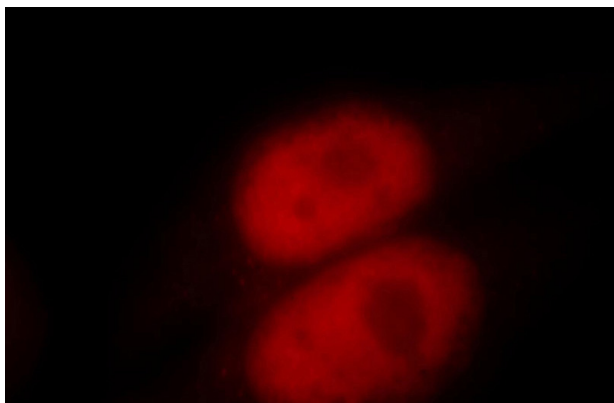
HEK-293 cells were subjected to SDS PAGE followed by western blot with Catalog No:112869(MSH6 antibody) at dilution of 1:500



Immunohistochemical of paraffin-embedded human spleen using Catalog No:112869(MSH6 antibody) at dilution of 1:100 (under 40x lens)

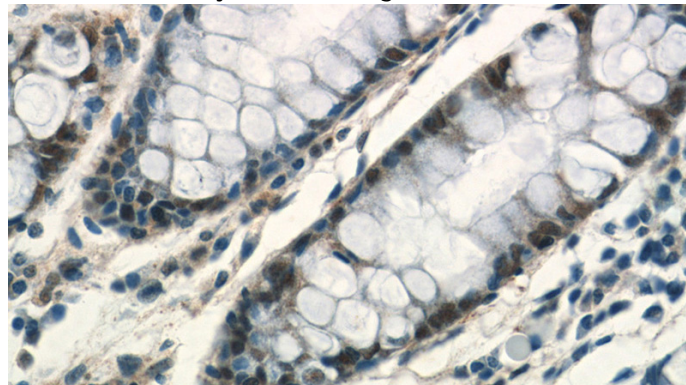
MSH6 antibody

Catalog Number: 112869



Immunofluorescent analysis of HeLa cells, using MSH6 antibody Catalog No:112869 at 1:25 dilution and Rhodamine-labeled goat anti-rabbit

IP Result of anti-MSH6 (IP:Catalog No:112869, 4ug; Detection:Catalog No:112869 1:600) with HEK-293 cells lysate 1120ug.



Immunohistochemistry of paraffin-embedded human colon tissue slide using Catalog No:112869(MSH6 Antibody) at dilution of 1:200 (under 40x lens)

