

# MS4A6A antibody



Catalog Number: 112865

---

## Product name

Polyclonal

MS4A6A antibody

## Ig Type

## Specificity

Rabbit IgG

human; other species not tested.

## Applications

## Antibody description

ELISA, WB

MS4A6A Rabbit Polyclonal antibody. Positive WB detected in K-562 cells, human brain tissue, Jurkat cells. Observed molecular weight by Western-blot: 40-45kd

## Dilutions

Recommended Dilution:

WB: 1:500-1:5000

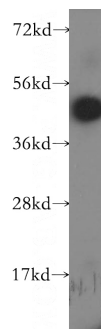
## Preparation

This antibody was obtained by immunization of MS4A6A recombinant protein (Accession Number: NM\_152852). Purification method: Antigen affinity purified.

## Validations

## Formulation

PBS with 0.1% sodium azide and 50% glycerol pH 7.3.



## Storage

Store at -20°C. DO NOT ALIQUOT

K-562 cells were subjected to SDS PAGE followed by western blot with Catalog No:112865(MS4A6A antibody) at dilution of 1:400

## Clonality