

MRPS28 antibody



Catalog Number: 112855

Product name

MRPS28 antibody

Specificity

human, mouse, rat; other species not tested.

Antibody description

MRPS28 Rabbit Polyclonal antibody. Positive WB detected in human placenta tissue, COLO 320 cells, HeLa cells. Observed molecular weight by Western-blot: 21kd

Preparation

This antibody was obtained by immunization of MRPS28 recombinant protein (Accession Number: NM_014018). Purification method: Antigen affinity purified.

Formulation

PBS with 0.02% sodium azide and 50% glycerol pH 7.3.

Storage

Store at -20°C. DO NOT ALIQUOT

Clonality

Polyclonal

Ig Type

Rabbit IgG

Applications

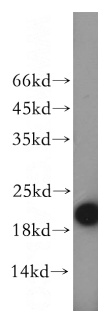
ELISA, WB

Dilutions

Recommended Dilution:

WB: 1:500-1:5000

Validations



human placenta tissue were subjected to SDS PAGE followed by western blot with Catalog No:112855(MRPS28 antibody) at dilution of 1:400