

# MRPS18B antibody



Catalog Number: 112846

## Product name

MRPS18B antibody

Recommended Dilution:

WB: 1:200-1:2000

## Specificity

Human, Mouse, Rat; other species not tested.

IP: 1:500-1:5000

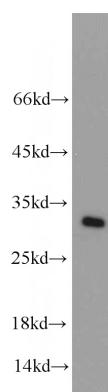
IHC: 1:20-1:200

## Antibody description

MRPS18B Rabbit Polyclonal antibody. Positive IP detected in HeLa cells. Positive WB detected in HeLa cells, HepG2 cells, human liver tissue, MCF7 cells, mouse liver tissue, rat heart tissue. Positive IF detected in HepG2 cells. Positive IHC detected in human breast cancer tissue, human liver tissue. Observed molecular weight by Western-blot: 29 kDa

IF: 1:20-1:200

## Validations



## Preparation

This antibody was obtained by immunization of MRPS18B recombinant protein (Accession Number: NM\_014046). Purification method: Antigen affinity purified.

HeLa cells were subjected to SDS PAGE followed by western blot with Catalog No:112846(MRPS18B antibody) at dilution of 1:500

## Formulation

PBS with 0.02% sodium azide and 50% glycerol pH 7.3.

## Storage

Store at -20°C. DO NOT ALIQUOT

## Clonality

Polyclonal

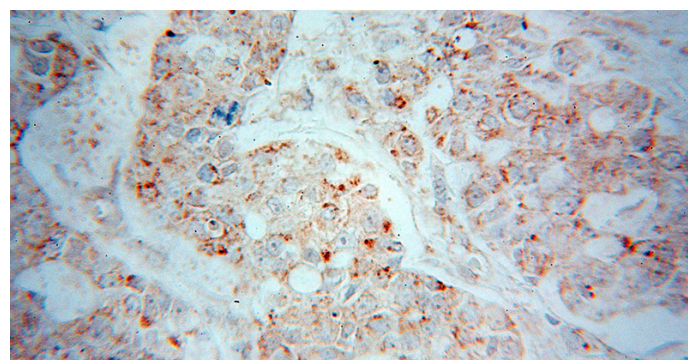
## Ig Type

Rabbit IgG

## Applications

ELISA, WB, IHC, IF, IP

## Dilutions

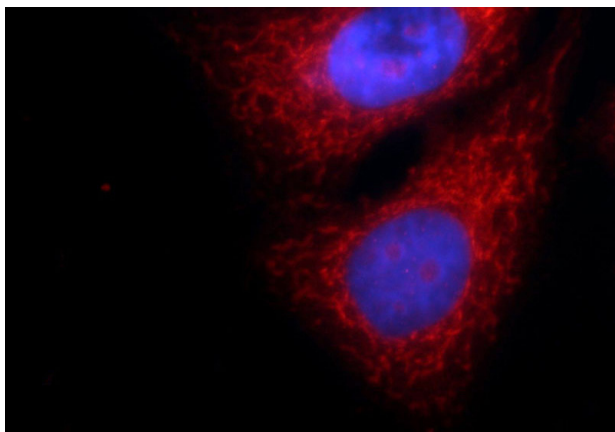


Immunohistochemical of paraffin-embedded human breast cancer using Catalog No:112846(MRPS18B antibody) at dilution of 1:50 (under 40x lens)

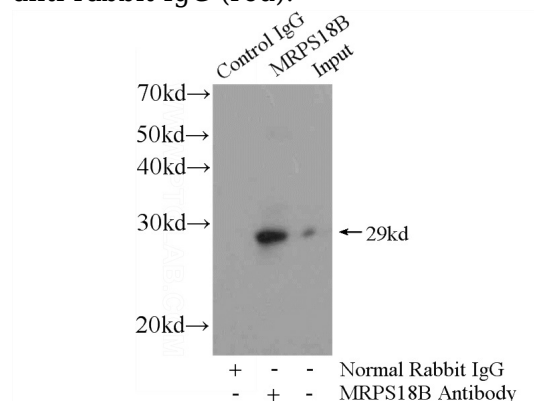
# MRPS18B antibody



Catalog Number: 112846



anti-rabbit IgG (red).



Immunofluorescent analysis of HepG2 cells using Catalog No:112846(MRPS18B Antibody) at dilution of 1:50 and Rhodamine-labeled goat

IP Result of anti-MRPS18B (IP:Catalog No:112846, 4ug; Detection:Catalog No:112846 1:1000) with HeLa cells lysate 2800ug.