

MRPS15 antibody



Catalog Number: 112842

Product name

MRPS15 antibody

WB: 1:500-1:5000

IHC: 1:20-1:200

Specificity

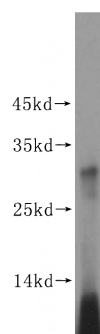
Human, Mouse, Rat; other species not tested.

IF: 1:10-1:100

Validations

Antibody description

MRPS15 Rabbit Polyclonal antibody. Positive WB detected in human brain tissue. Positive IF detected in HepG2 cells. Positive IHC detected in human spleen tissue, human brain tissue, human kidney tissue, human lung tissue, human ovary tissue, human testis tissue. Observed molecular weight by Western-blot: 30kd



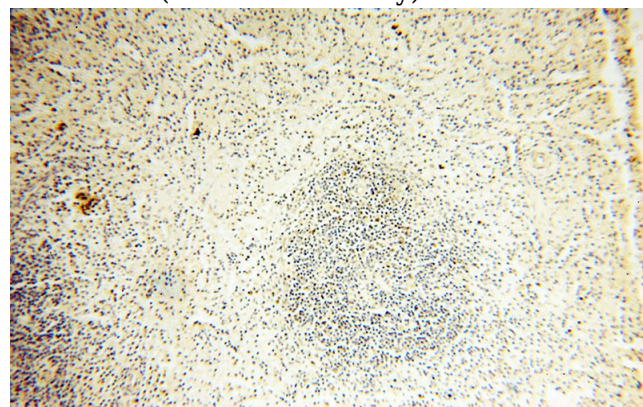
Preparation

This antibody was obtained by immunization of MRPS15 recombinant protein (Accession Number: NM_031280). Purification method: Antigen affinity purified.

human brain tissue were subjected to SDS PAGE followed by western blot with Catalog No:112842(MRPS15 antibody) at dilution of 1:500

Formulation

PBS with 0.02% sodium azide and 50% glycerol pH 7.3.



Storage

Store at -20°C. DO NOT ALIQUOT

Clonality

Polyclonal

Immunohistochemical of paraffin-embedded human spleen using Catalog No:112842(MRPS15 antibody) at dilution of 1:100 (under 10x lens)

Ig Type

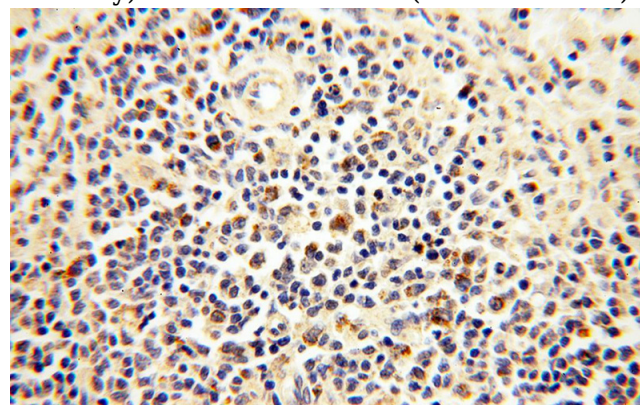
Rabbit IgG

Applications

ELISA, WB, IHC, IF

Dilutions

Recommended Dilution:

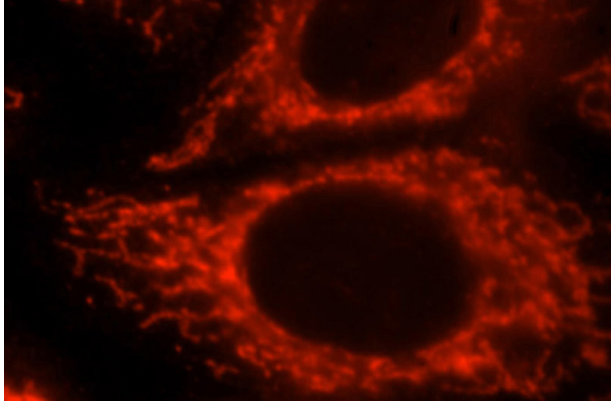


MRPS15 antibody



Catalog Number: 112842

Immunohistochemical of paraffin-embedded human spleen using Catalog No:112842(MRPS15 antibody) at dilution of 1:100 (under 40x lens)



Immunofluorescent analysis of HepG2 cells, using MRPS15 antibody Catalog No:112842 at 1:25 dilution and Rhodamine-labeled goat anti-rabbit IgG (red).