

MRPL9 antibody

Catalog Number: 112837

Product name

MRPL9 antibody

Specificity

human, mouse, rat; other species not tested.

Antibody description

MRPL9 Rabbit Polyclonal antibody. Positive WB detected in MCF7 cells, PC-3 cells. Positive IHC detected in human breast cancer. Observed molecular weight by Western-blot: 26-28kd

Preparation

This antibody was obtained by immunization of MRPL9 recombinant protein (Accession Number: NM_031420). Purification method: Antigen affinity purified.

Formulation

PBS with 0.02% sodium azide and 50% glycerol pH 7.3.

Storage

Store at -20°C. DO NOT ALIQUOT

Clonality

Polyclonal

Ig Type

Rabbit IgG

Applications

ELISA, WB, IHC

Dilutions

Recommended Dilution:

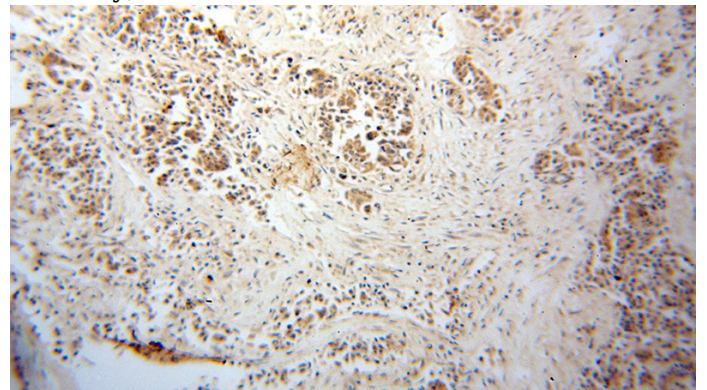
WB: 1:500-1:5000

IHC: 1:20-1:200

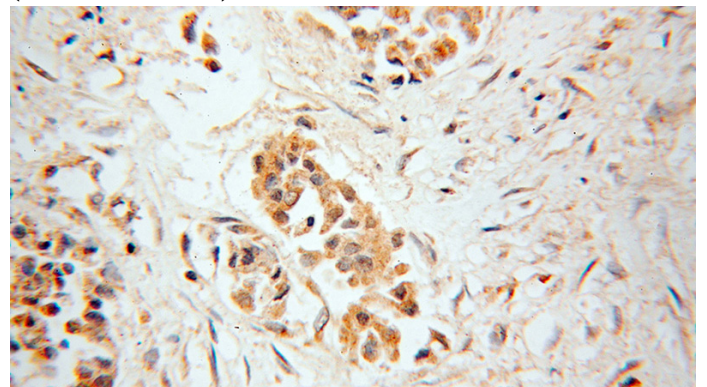
Validations



MCF7 cells were subjected to SDS PAGE followed by western blot with Catalog No:112837(MRPL9 antibody) at dilution of 1:500



Immunohistochemical of paraffin-embedded human breast cancer using Catalog No:112837(MRPL9 antibody) at dilution of 1:100 (under 10x lens)



Immunohistochemical of paraffin-embedded human breast cancer using Catalog No:112837(MRPL9 antibody) at dilution of 1:100 (under 40x lens)