

MRPL52 antibody



Catalog Number: 112834

Product name

MRPL52 antibody

IHC: 1:20-1:200

Specificity

human, mouse, rat; other species not tested.

Antibody description

MRPL52 Rabbit Polyclonal antibody. Positive WB detected in human liver tissue, HeLa cells, human heart tissue. Positive IHC detected in human kidney. Observed molecular weight by Western-blot: 18-21kd

Preparation

This antibody was obtained by immunization of MRPL52 recombinant protein (Accession Number: NM_178336). Purification method: Antigen affinity purified.

Formulation

PBS with 0.02% sodium azide and 50% glycerol pH 7.3.

Storage

Store at -20°C. DO NOT ALIQUOT

Clonality

Polyclonal

Ig Type

Rabbit IgG

Applications

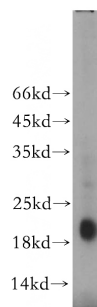
ELISA, WB, IHC

Dilutions

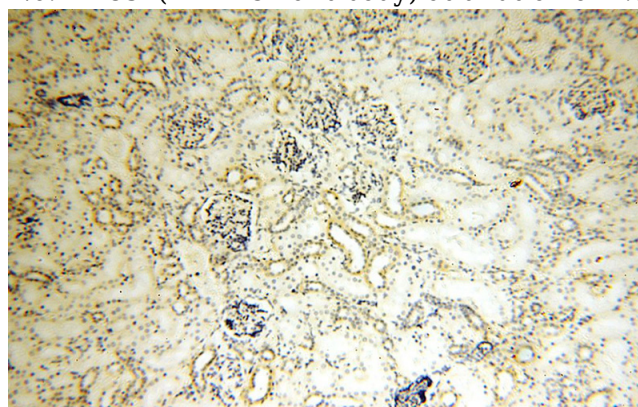
Recommended Dilution:

WB: 1:200-1:2000

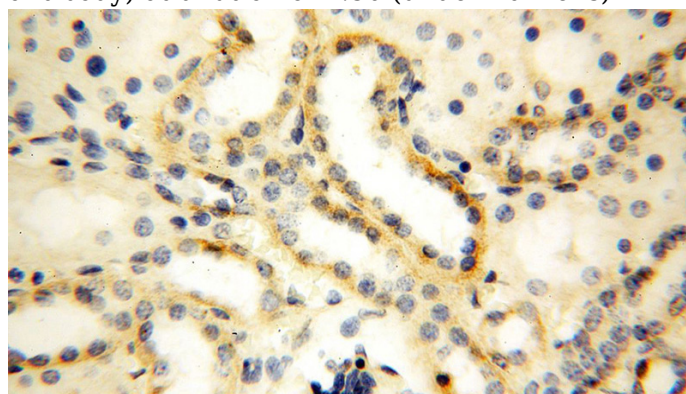
Validations



human liver tissue were subjected to SDS PAGE followed by western blot with Catalog No:112834(MRPL52 antibody) at dilution of 1:300



Immunohistochemical of paraffin-embedded human kidney using Catalog No:112834(MRPL52 antibody) at dilution of 1:50 (under 10x lens)



Immunohistochemical of paraffin-embedded human kidney using Catalog No:112834(MRPL52 antibody) at dilution of 1:50 (under 40x lens)