

MRPL49 antibody



Catalog Number: 112833

Product name

MRPL49 antibody

IP: 1:200-1:2000

IHC: 1:20-1:200

Specificity

Human; other species not tested.

Antibody description

MRPL49 Rabbit Polyclonal antibody. Positive IHC detected in human breast cancer tissue. Positive WB detected in BxPC-3 cells, A549 cells, HeLa cells. Positive IP detected in HeLa cells. Observed molecular weight by Western-blot: 19 kDa

Preparation

This antibody was obtained by immunization of MRPL49 recombinant protein (Accession Number: NM_004927). Purification method: Antigen affinity purified.

Formulation

PBS with 0.02% sodium azide and 50% glycerol pH 7.3.

Storage

Store at -20°C. DO NOT ALIQUOT

Clonality

Polyclonal

Ig Type

Rabbit IgG

Applications

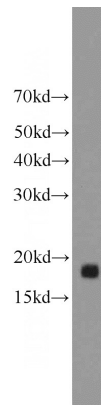
ELISA, WB, IHC, IP

Dilutions

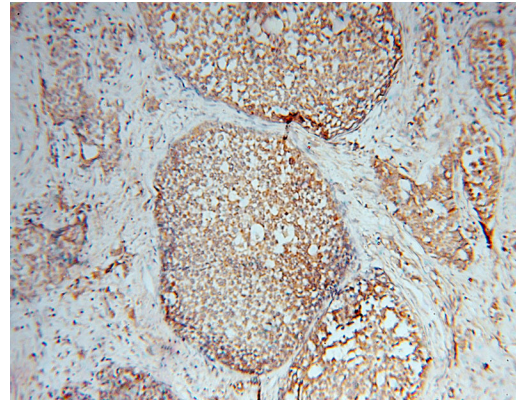
Recommended Dilution:

WB: 1:200-1:2000

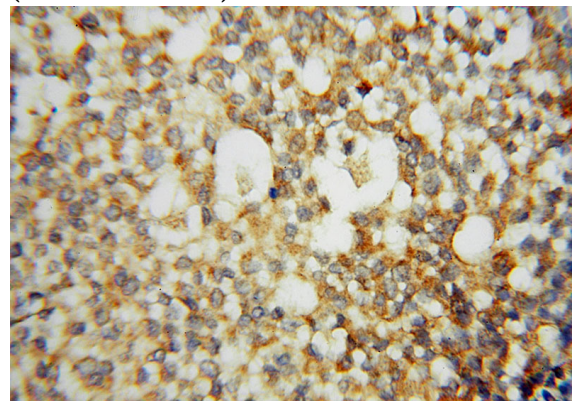
Validations



BxPC-3 cells were subjected to SDS PAGE followed by western blot with Catalog No:112833(MRPL49 antibody) at dilution of 1:800



Immunohistochemical of paraffin-embedded human breast cancer using Catalog No:112833(MRPL49 antibody) at dilution of 1:50 (under 10x lens)




Immunohistochemical of paraffin-embedded

MRPL49 antibody



Catalog Number: 112833

human breast cancer using Catalog
No:112833(MRPL49 antibody) at dilution of 1:50
(under 40x lens) 

IP Result of anti-MRPL49 (IP:Catalog No:112833,
4ug; Detection:Catalog No:112833 1:500) with
HeLa cells lysate 3360ug.