

# MRPL38 antibody



Catalog Number: 112827

## Product name

MRPL38 antibody

IHC: 1:20-1:200

IF: 1:10-1:100

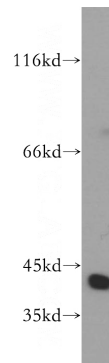
## Specificity

Human, Mouse, Rat; other species not tested.

## Validations

## Antibody description

MRPL38 Rabbit Polyclonal antibody. Positive WB detected in mouse brain tissue, human placenta tissue, mouse liver tissue. Positive IF detected in HepG2 cells. Positive IHC detected in human liver tissue. Observed molecular weight by Western-blot: 41kd



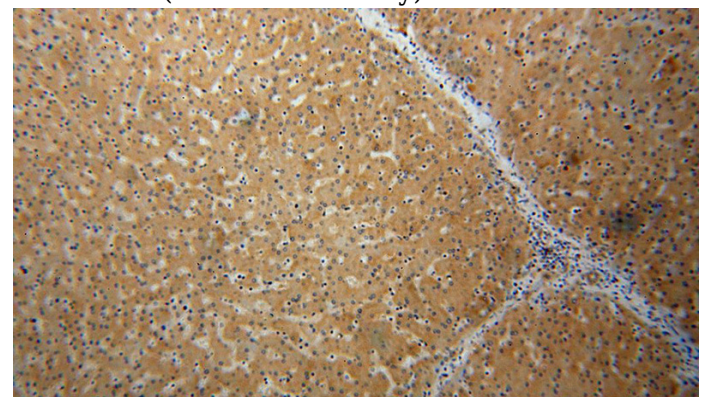
## Preparation

This antibody was obtained by immunization of MRPL38 recombinant protein (Accession Number: BC013311). Purification method: Antigen affinity purified.

mouse brain tissue were subjected to SDS PAGE followed by western blot with Catalog No:112827(MRPL38 antibody) at dilution of 1:500

## Formulation

PBS with 0.02% sodium azide and 50% glycerol pH 7.3.



## Storage

Store at -20°C. DO NOT ALIQUOT

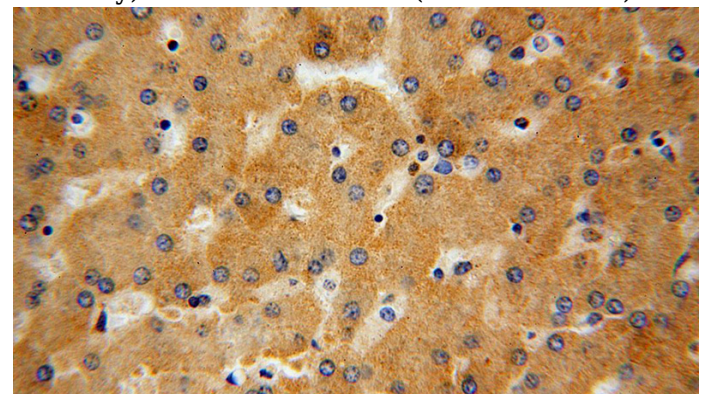
## Clonality

Polyclonal

Immunohistochemical of paraffin-embedded human liver using Catalog No:112827(MRPL38 antibody) at dilution of 1:100 (under 10x lens)

## Ig Type

Rabbit IgG



## Applications

ELISA, WB, IHC, IF

## Dilutions

Recommended Dilution:

WB: 1:500-1:5000

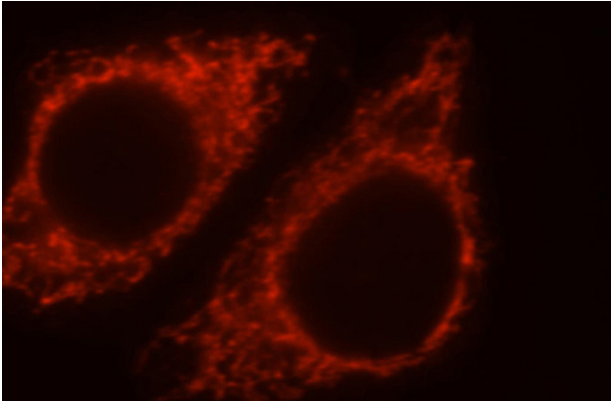
Immunohistochemical of paraffin-embedded human liver using Catalog No:112827(MRPL38

# MRPL38 antibody

Catalog Number: 112827

---

antibody) at dilution of 1:100 (under 40x lens)



Immunofluorescent analysis of HepG2 cells, using MRPL38 antibody Catalog No:112827 at 1:25 dilution and Rhodamine-labeled goat anti-rabbit IgG (red).