

MRPL37 antibody



Catalog Number: 112826

Product name

MRPL37 antibody

Specificity

Human, Mouse, Rat; other species not tested.

Antibody description

MRPL37 Rabbit Polyclonal antibody. Positive IHC detected in human lymphoma tissue. Positive WB detected in mouse liver tissue, human heart tissue, mouse ovary tissue, mouse uterus tissue. Observed molecular weight by Western-blot: 48kd

Preparation

This antibody was obtained by immunization of MRPL37 recombinant protein (Accession Number: NM_016491). Purification method: Antigen affinity purified.

Formulation

PBS with 0.02% sodium azide and 50% glycerol pH 7.3.

Storage

Store at -20°C. DO NOT ALIQUOT

Clonality

Polyclonal

Ig Type

Rabbit IgG

Applications

ELISA, WB, IHC

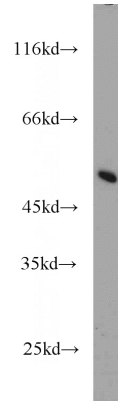
Dilutions

Recommended Dilution:

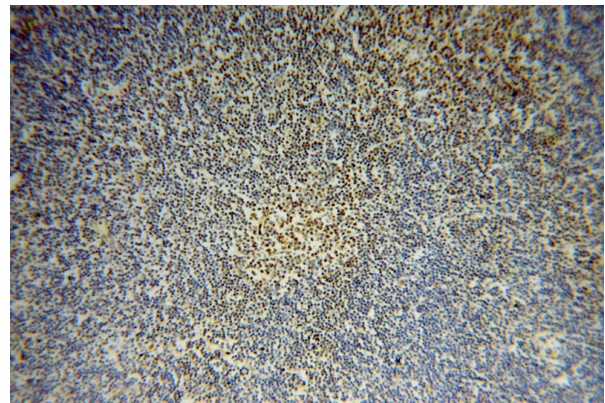
WB: 1:200-1:2000

IHC: 1:20-1:200

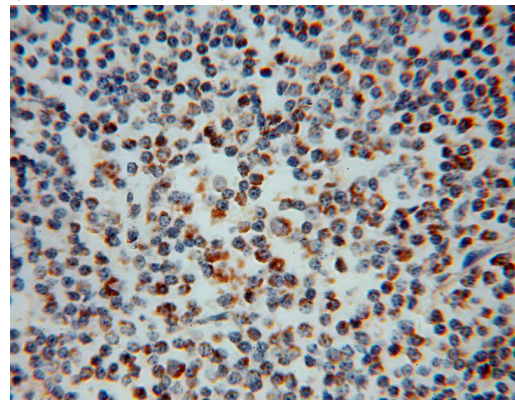
Validations



mouse liver tissue were subjected to SDS PAGE followed by western blot with Catalog No:112826(MRPL37 antibody) at dilution of 1:1000



Immunohistochemical of paraffin-embedded human lymphoma using Catalog No:112826(MRPL37 antibody) at dilution of 1:50 (under 10x lens)



Immunohistochemical of paraffin-embedded

MRPL37 antibody



Catalog Number: 112826

human lymphoma using Catalog

No:112826(MRPL37 antibody) at dilution of 1:50
(under 40x lens)