

MRPL34 antibody



Catalog Number: 112824

Product name

MRPL34 antibody

IHC: 1:20-1:200

IF: 1:20-1:200

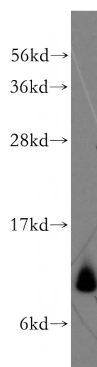
Specificity

Human, Mouse, Rat; other species not tested.

Validations

Antibody description

MRPL34 Rabbit Polyclonal antibody. Positive WB detected in human liver tissue, human heart tissue. Positive IF detected in HepG2 cells. Positive IHC detected in human liver cancer tissue. Observed molecular weight by Western-blot: 10kd



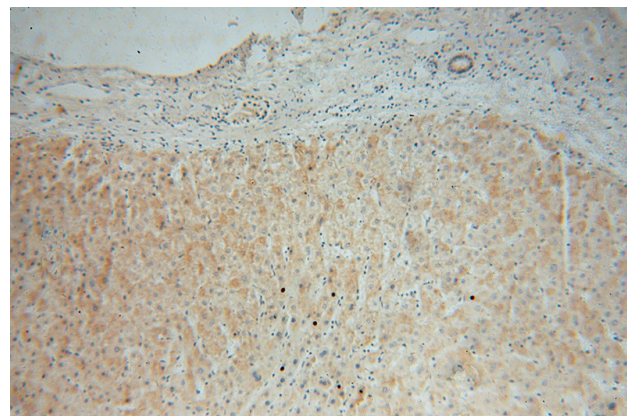
Preparation

This antibody was obtained by immunization of MRPL34 recombinant protein (Accession Number: XM_011528189). Purification method: Antigen affinity purified.

human liver tissue were subjected to SDS PAGE followed by western blot with Catalog No:112824(MRPL34 antibody) at dilution of 1:2000

Formulation

PBS with 0.02% sodium azide and 50% glycerol pH 7.3.



Storage

Store at -20°C. DO NOT ALIQUOT

Clonality

Polyclonal

Ig Type

Rabbit IgG

Immunohistochemical of paraffin-embedded human liver cancer using Catalog No:112824(MRPL34 antibody) at dilution of 1:100 (under 10x lens)

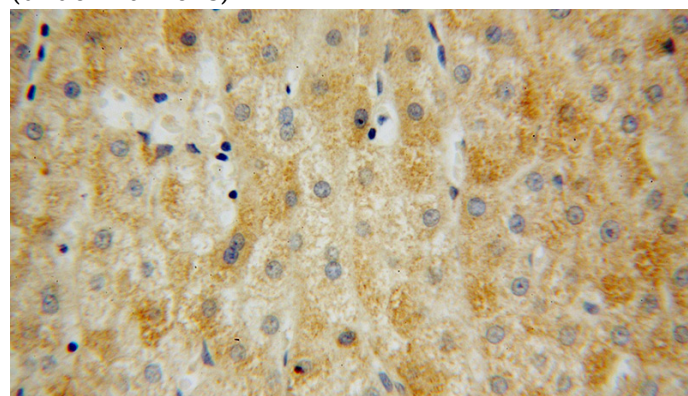
Applications

ELISA, WB, IHC, IF

Dilutions

Recommended Dilution:

WB: 1:1000-1:10000

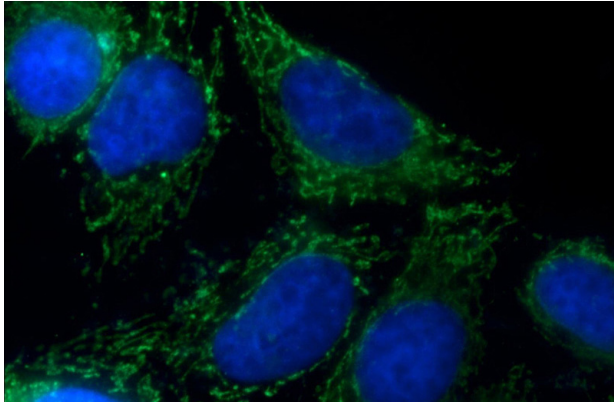


MRPL34 antibody



Catalog Number: 112824

Immunohistochemical of paraffin-embedded human liver cancer using Catalog No:112824(MRPL34 antibody) at dilution of 1:100 (under 40x lens)



Immunofluorescent analysis of HepG2 cells using Catalog No:112824(MRPL34 Antibody) at dilution of 1:50 and Alexa Fluor 488-conjugated AffiniPure Goat Anti-Rabbit IgG(H+L)