

MRPL33 antibody



Catalog Number: 112823

Product name

MRPL33 antibody

Specificity

Human; other species not tested.

Antibody description

MRPL33 Rabbit Polyclonal antibody. Positive IHC detected in human heart tissue, human kidney tissue. Positive IF detected in HepG2 cells.

Preparation

This antibody was obtained by immunization of MRPL33 recombinant protein (Accession Number: NM_004891). Purification method: Antigen Affinity purified.

Formulation

PBS with 0.02% sodium azide and 50% glycerol pH 7.3.

Storage

Store at -20°C. DO NOT ALIQUOT

Clonality

Polyclonal

Ig Type

Rabbit IgG

Applications

ELISA, IHC, IF

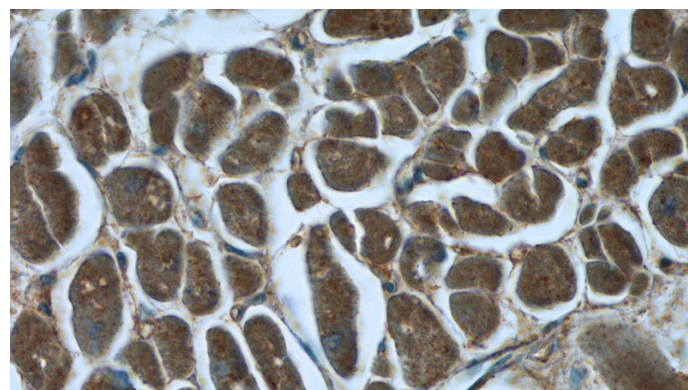
Dilutions

Recommended Dilution:

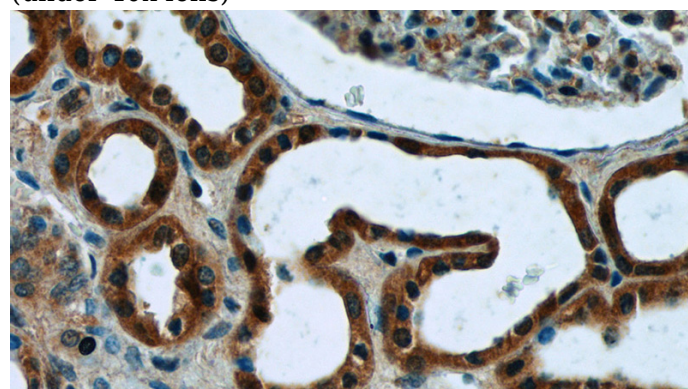
IHC: 1:20-1:200

IF: 1:10-1:100

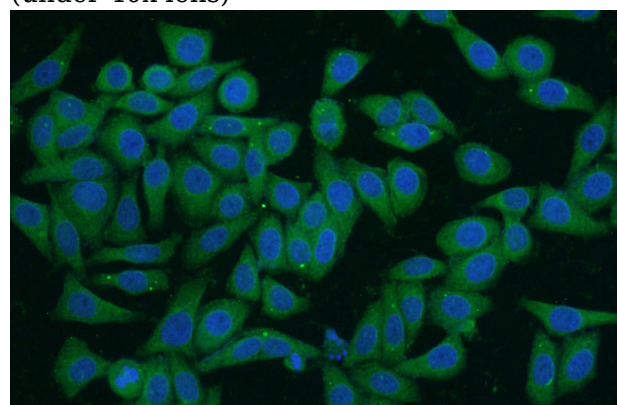
Validations



Immunohistochemistry of paraffin-embedded human heart tissue slide using Catalog No:112823(MRPL33 Antibody) at dilution of 1:50 (under 40x lens)



Immunohistochemistry of paraffin-embedded human kidney tissue slide using Catalog No:112823(MRPL33 Antibody) at dilution of 1:50 (under 40x lens)



Immunofluorescent analysis of HepG2 cells using Catalog No:112823(MRPL33 Antibody) at dilution of 1:25 and Alexa Fluor 488-conjugated AffiniPure Goat Anti-Rabbit IgG(H+L)