

# MRPL24 antibody

Catalog Number: 112819

## Product name

MRPL24 antibody

## Specificity

Human, Mouse, Rat; other species not tested.

## Antibody description

MRPL24 Rabbit Polyclonal antibody. Positive WB detected in mouse liver tissue, human brain tissue, human heart tissue. Positive IP detected in HEK-293 cells. Observed molecular weight by Western-blot: 25 kDa

## Preparation

This antibody was obtained by immunization of MRPL24 recombinant protein (Accession Number: NM\_024540). Purification method: Antigen affinity purified.

## Formulation

PBS with 0.02% sodium azide and 50% glycerol pH 7.3.

## Storage

Store at -20°C. DO NOT ALIQUOT

## Clonality

Polyclonal

## Ig Type

Rabbit IgG

## Applications

ELISA, WB, IP

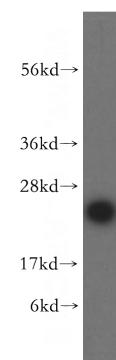
## Dilutions

Recommended Dilution:

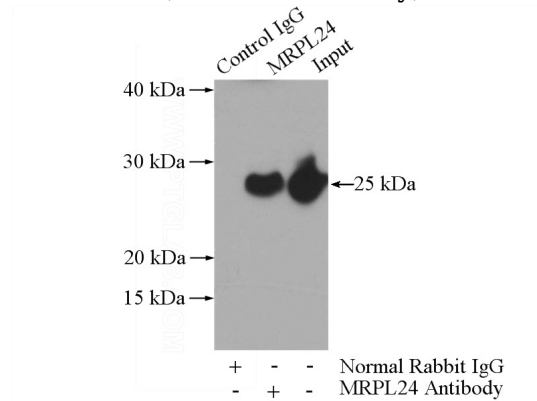
WB: 1:500-1:5000

IP: 1:500-1:5000

## Validations



mouse liver tissue were subjected to SDS PAGE followed by western blot with Catalog No:112819(MRPL24 antibody) at dilution of 1:500



IP Result of anti-MRPL24 (IP:Catalog No:112819, 4ug; Detection:Catalog No:112819 1:1000) with HEK-293 cells lysate 1480ug.