

MRPL19 antibody



Catalog Number: 112815

Product name

MRPL19 antibody

IHC: 1:20-1:200

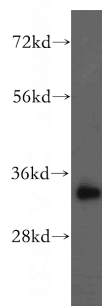
Specificity

human, mouse, rat; other species not tested.

Validations

Antibody description

MRPL19 Rabbit Polyclonal antibody. Positive IHC detected in human testis. Positive WB detected in human heart tissue, HeLa cells, human kidney tissue, human liver tissue. Observed molecular weight by Western-blot: 34kd



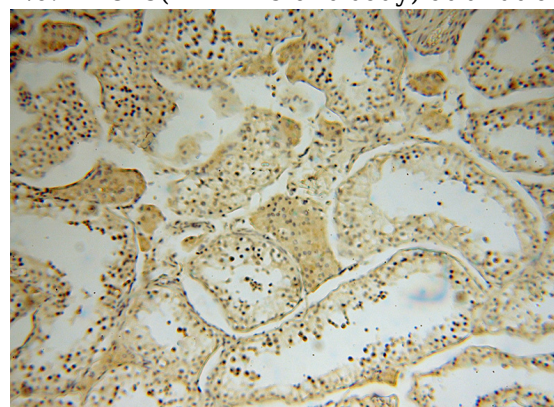
Preparation

This antibody was obtained by immunization of MRPL19 recombinant protein (Accession Number: NM_014763). Purification method: Antigen affinity purified.

human heart tissue were subjected to SDS PAGE followed by western blot with Catalog No:112815(MRPL19 antibody) at dilution of 1:500

Formulation

PBS with 0.02% sodium azide and 50% glycerol pH 7.3.



Storage

Store at -20°C. DO NOT ALIQUOT

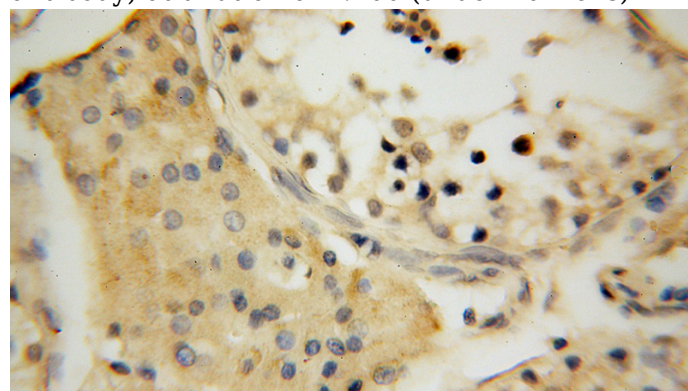
Clonality

Polyclonal

Immunohistochemical of paraffin-embedded human testis using Catalog No:112815(MRPL19 antibody) at dilution of 1:100 (under 10x lens)

Ig Type

Rabbit IgG



Applications

ELISA, WB, IHC

Dilutions

Recommended Dilution:

WB: 1:500-1:5000

Immunohistochemical of paraffin-embedded human testis using Catalog No:112815(MRPL19 antibody) at dilution of 1:100 (under 40x lens)