

MRPL14 antibody



Catalog Number: 112813

Product name

MRPL14 antibody

IHC: 1:20-1:200

IF: 1:20-1:200

Specificity

Human, Mouse, Rat; other species not tested.

Antibody description

MRPL14 Rabbit Polyclonal antibody. Positive IHC detected in human pancreas tissue, human colon tissue. Positive IF detected in HEK-293 cells. Positive WB detected in HEK-293 cells. Observed molecular weight by Western-blot: 16 kDa

Preparation

This antibody was obtained by immunization of MRPL14 recombinant protein (Accession Number: NM_032111). Purification method: Antigen affinity purified.

Formulation

PBS with 0.1% sodium azide and 50% glycerol pH 7.3.

Storage

Store at -20°C. DO NOT ALIQUOT

Clonality

Polyclonal

Ig Type

Rabbit IgG

Applications

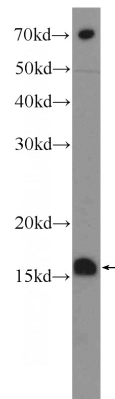
ELISA, WB, IHC, IF

Dilutions

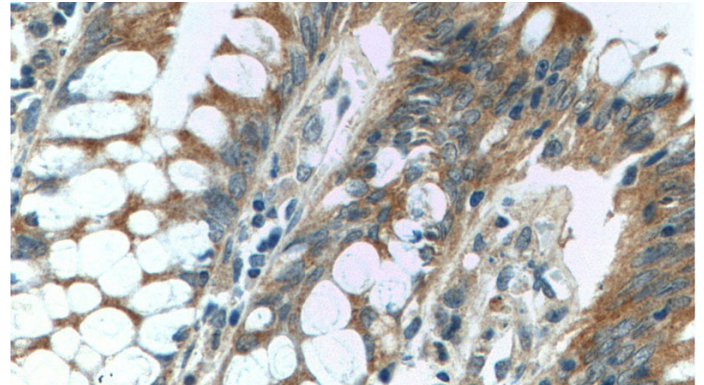
Recommended Dilution:

WB: 1:200-1:1000

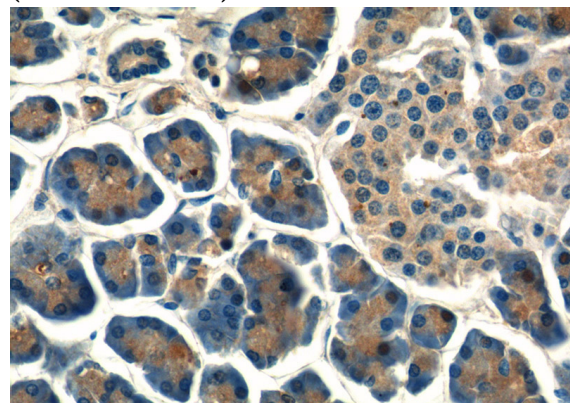
Validations



HEK-293 cells were subjected to SDS PAGE followed by western blot with Catalog No:112813(MRPL14 Antibody) at dilution of 1:300



Immunohistochemistry of paraffin-embedded human colon tissue slide using Catalog No:112813(MRPL14 Antibody) at dilution of 1:50 (under 40x lens)

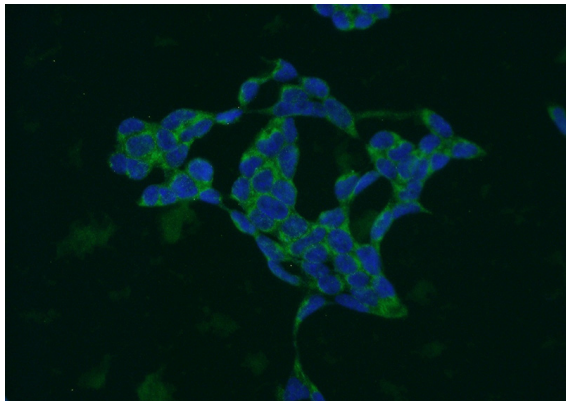


Immunohistochemistry of paraffin-embedded

MRPL14 antibody

Catalog Number: 112813

human pancreas tissue slide using Catalog No:112813(MRPL14 Antibody) at dilution of 1:50 (under 40x lens)



Immunofluorescent analysis of HEK-293 cells using Catalog No:112813(MRPL14 Antibody) at dilution of 1:50 and Alexa Fluor 488-conjugated AffiniPure Goat Anti-Rabbit IgG(H+L)