

MRPL1 antibody

Catalog Number: 112808

Product name

MRPL1 antibody

Specificity

Human, Mouse, Rat; other species not tested.

Antibody description

MRPL1 Rabbit Polyclonal antibody. Positive WB detected in human liver tissue, HeLa cells, HepG2 cells, K-562 cells. Positive IHC detected in human stomach tissue, human lung cancer tissue.

Observed molecular weight by Western-blot: 34 kDa

Preparation

This antibody was obtained by immunization of MRPL1 recombinant protein (Accession Number: XM_047416089). Purification method: Antigen affinity purified.

Formulation

PBS with 0.02% sodium azide and 50% glycerol pH 7.3.

Storage

Store at -20°C. DO NOT ALIQUOT

Clonality

Polyclonal

Ig Type

Rabbit IgG

Applications

ELISA, WB, IHC

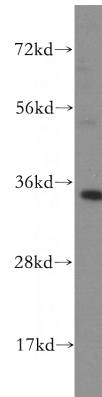
Dilutions

Recommended Dilution:

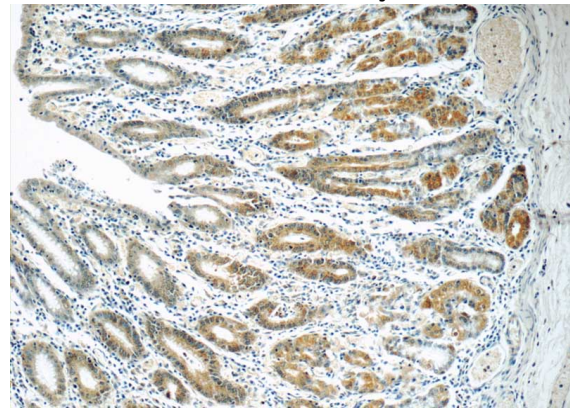
WB: 1:500-1:5000

IHC: 1:20-1:200

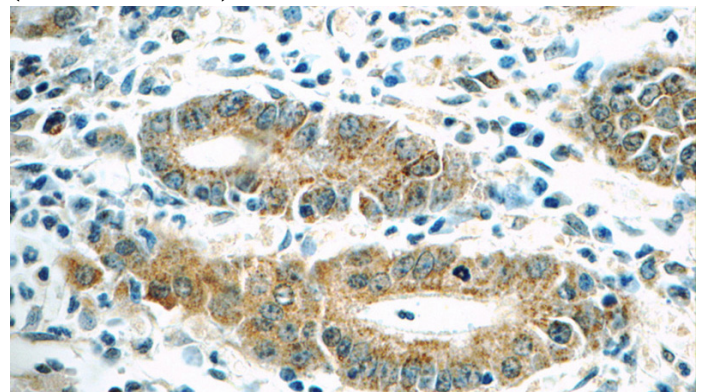
Validations



human liver tissue were subjected to SDS PAGE followed by western blot with Catalog No:112808(MRPL1 antibody) at dilution of 1:1000



Immunohistochemistry of paraffin-embedded human stomach tissue slide using Catalog No:112808(MRPL1 Antibody) at dilution of 1:50 (under 10x lens)



Immunohistochemistry of paraffin-embedded human stomach tissue slide using Catalog No:112808(MRPL1 Antibody) at dilution of 1:50

MRPL1 antibody



Catalog Number: 112808

(under 40x lens)