

MTPN antibody



Catalog Number: 112794

Product name

MTPN antibody

WB: 1:500-1:5000

IHC: 1:20-1:200

Specificity

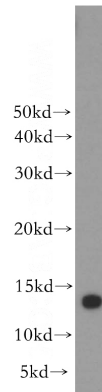
Human, Mouse, Rat; other species not tested.

IF: 1:10-1:100

Validations

Antibody description

MTPN Rabbit Polyclonal antibody. Positive WB detected in HeLa cells, HEK-293 cells, human brain tissue, human heart tissue, MCF7 cells. Positive IF detected in HepG2 cells, Hela cells. Positive IHC detected in human cerebellum tissue, human heart tissue. Observed molecular weight by Western-blot: 12kd



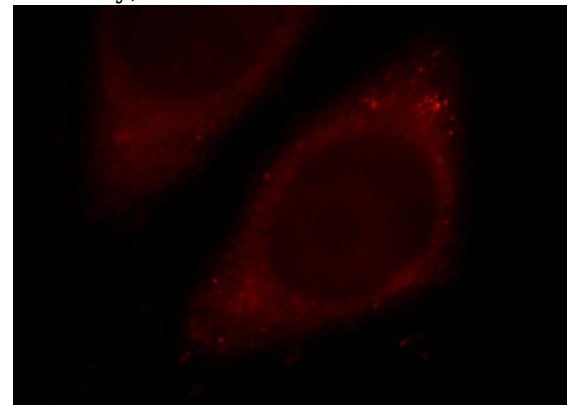
Preparation

This antibody was obtained by immunization of MTPN recombinant protein (Accession Number: NM_145808). Purification method: Antigen affinity purified.

HeLa cells were subjected to SDS PAGE followed by western blot with Catalog No:112794(MTPN antibody) at dilution of 1:300

Formulation

PBS with 0.02% sodium azide and 50% glycerol pH 7.3.



Storage

Store at -20°C. DO NOT ALIQUOT

Clonality

Polyclonal

Immunofluorescent analysis of HepG2 cells, using MTPN antibody Catalog No:112794 at 1:25 dilution and Rhodamine-labeled goat anti-rabbit IgG (red).

Ig Type

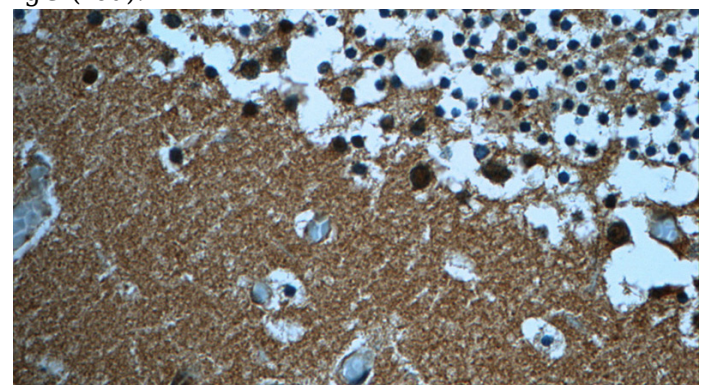
Rabbit IgG

Applications

ELISA, WB, IF, IHC

Dilutions

Recommended Dilution:



MTPN antibody



Catalog Number: 112794

Immunohistochemistry of paraffin-embedded human cerebellum tissue slide using Catalog

No:112794(MTPN Antibody) at dilution of 1:50 (under 40x lens)