

MTMR8 antibody



Catalog Number: 112790

Product name

MTMR8 antibody

Specificity

Human; other species not tested.

Antibody description

MTMR8 Rabbit Polyclonal antibody. Positive IF detected in A375 cells. Positive WB detected in HeLa cells, A375 cells, human placenta tissue. Observed molecular weight by Western-blot: 55-58kd

Preparation

This antibody was obtained by immunization of MTMR8 recombinant protein (Accession Number: NM_017677). Purification method: Antigen affinity purified.

Formulation

PBS with 0.02% sodium azide and 50% glycerol pH 7.3.

Storage

Store at -20°C. DO NOT ALIQUOT

Clonality

Polyclonal

Ig Type

Rabbit IgG

Applications

ELISA, WB, IF

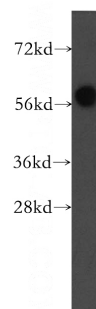
Dilutions

Recommended Dilution:

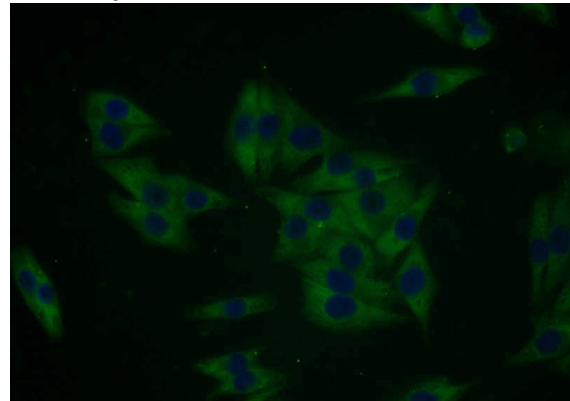
WB: 1:500-1:5000

IF: 1:10-1:100

Validations



HeLa cells were subjected to SDS PAGE followed by western blot with Catalog No:112790(MTMR8 antibody) at dilution of 1:300



Immunofluorescent analysis of A375 cells using Catalog No:112790(MTMR8 Antibody) at dilution of 1:25 and Alexa Fluor 488-conjugated AffiniPure Goat Anti-Rabbit IgG(H+L)