

# MTMR15 antibody



Catalog Number: 112784

## Product name

MTMR15 antibody

## Specificity

human; other species not tested.

## Antibody description

MTMR15 Rabbit Polyclonal antibody. Positive WB detected in HeLa cells, human spleen tissue. Observed molecular weight by Western-blot: 63-68kd

## Preparation

This antibody was obtained by immunization of MTMR15 recombinant protein (Accession Number: NM\_001146096). Purification method: Antigen affinity purified.

## Formulation

PBS with 0.02% sodium azide and 50% glycerol pH 7.3.

## Storage

Store at -20°C. DO NOT ALIQUOT

## Clonality

Polyclonal

## Ig Type

Rabbit IgG

## Applications

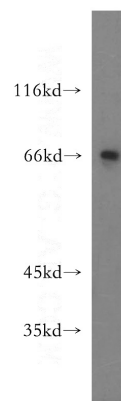
ELISA, WB

## Dilutions

Recommended Dilution:

WB: 1:200-1:2000

## Validations



HeLa cells were subjected to SDS PAGE followed by western blot with Catalog No:112784(MTMR15 antibody) at dilution of 1:300