

# MTH1 antibody



Catalog Number: 112775

## Product name

MTH1 antibody

IHC: 1:20-1:200

IF: 1:10-1:100

## Specificity

Human, Mouse, Rat; other species not tested.

## Antibody description

MTH1 Rabbit Polyclonal antibody. Positive IHC detected in human lung cancer tissue. Positive IF detected in PC-3 cells. Positive WB detected in HepG2 cells, HEK-293 cells, PC-3 cells. Observed molecular weight by Western-blot: 18-24 kDa

## Preparation

This antibody was obtained by immunization of MTH1 recombinant protein (Accession Number: NM\_198954). Purification method: Antigen affinity purified.

## Formulation

PBS with 0.02% sodium azide and 50% glycerol pH 7.3.

## Storage

Store at -20°C. DO NOT ALIQUOT

## Clonality

Polyclonal

## Ig Type

Rabbit IgG

## Applications

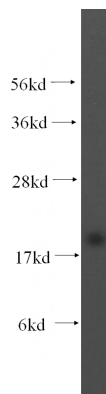
ELISA, IHC, WB, IF

## Dilutions

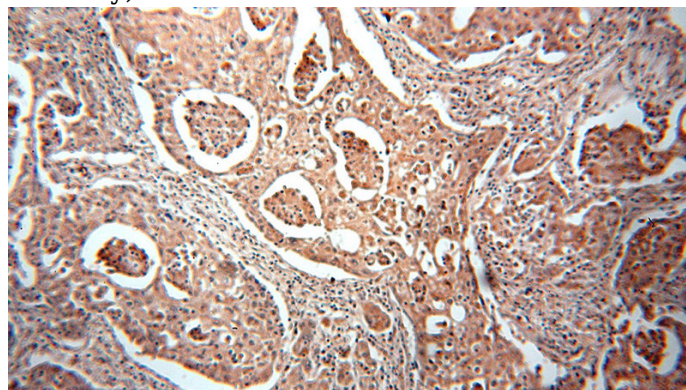
Recommended Dilution:

WB: 1:200-1:1000

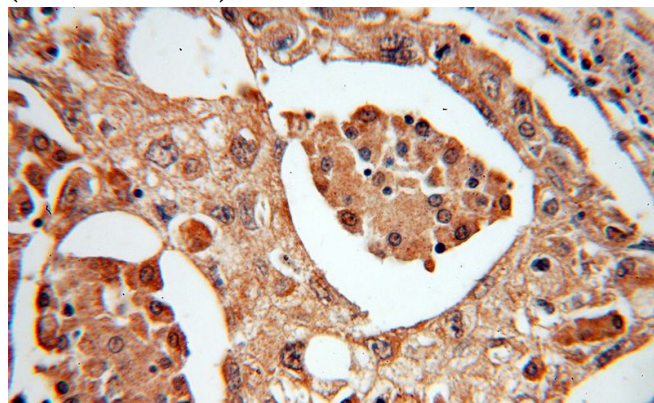
## Validations



HepG2 cells were subjected to SDS PAGE followed by western blot with Catalog No:112775(NUDT1 antibody) at dilution of 1:300



Immunohistochemical of paraffin-embedded human lung cancer using Catalog No:112775(NUDT1 antibody) at dilution of 1:50 (under 10x lens)



Immunohistochemical of paraffin-embedded

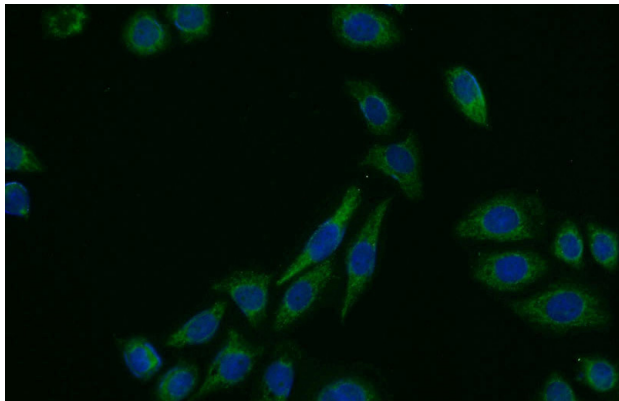
# MTH1 antibody



Catalog Number: 112775

---

human lung cancer using Catalog  
No:112775(NUDT1 antibody) at dilution of 1:50  
(under 40x lens)



Immunofluorescent analysis of PC-3 cells using  
Catalog No:112775(NUDT1 Antibody) at dilution  
of 1:25 and Alexa Fluor 488-conjugated AffiniPure  
Goat Anti-Rabbit IgG(H+L)