

# MTF1 antibody

Catalog Number: 112771

---

## Product name

MTF1 antibody

## Specificity

Human, Mouse; other species not tested.

## Antibody description

MTF1 Rabbit Polyclonal antibody. Positive WB detected in mouse liver tissue, Jurkat cells, mouse brain tissue, mouse heart tissue, mouse skeletal muscle tissue. Observed molecular weight by Western-blot: 65-70 kDa

## Preparation

This antibody was obtained by immunization of MTF1 recombinant protein (Accession Number: XM\_047421170). Purification method: Antigen affinity purified.

## Formulation

PBS with 0.1% sodium azide and 50% glycerol pH 7.3.

## Storage

Store at -20°C. DO NOT ALIQUOT

## Clonality

Polyclonal

## Ig Type

Rabbit IgG

## Applications

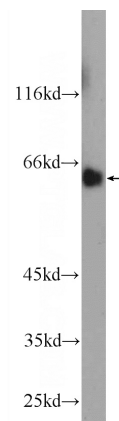
ELISA, WB

## Dilutions

Recommended Dilution:

WB: 1:500-1:5000

## Validations



mouse liver tissue were subjected to SDS PAGE followed by western blot with Catalog No:112771(MTF1 Antibody) at dilution of 1:1000