

# MTCO2 antibody



Catalog Number: 112767

## Product name

MTCO2 antibody

WB: 1:500-1:5000

IP: 1:500-1:5000

## Specificity

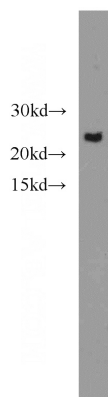
Human, Mouse, Rat; other species not tested.

IHC: 1:20-1:200

## Antibody description

MTCO2 Rabbit Polyclonal antibody. Positive IP detected in HeLa cells. Positive WB detected in HepG2 cells, HeLa cells, human placenta tissue, mouse brain tissue, mouse liver tissue, rat liver tissue. Positive IHC detected in human colon cancer tissue, human breast cancer tissue. Positive FC detected in HeLa cells. Observed molecular weight by Western-blot: 23-26 kDa

## Validations



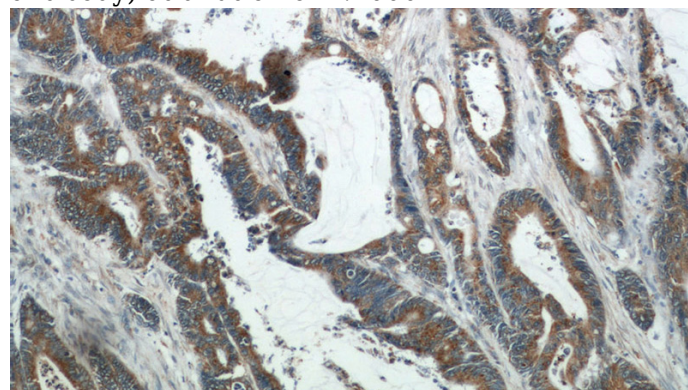
## Preparation

This antibody was obtained by immunization of Peptide (Accession Number: YP\_003024029). Purification method: Antigen affinity purified.

HepG2 cells were subjected to SDS PAGE followed by western blot with Catalog No:112767(COX2 antibody) at dilution of 1:1000

## Formulation

PBS with 0.02% sodium azide and 50% glycerol pH 7.3.



## Storage

Store at -20°C. DO NOT ALIQUOT

## Clonality

Polyclonal

Immunohistochemical of paraffin-embedded human colon cancer using Catalog No:112767(COX2 antibody) at dilution of 1:50 (under 10x lens)

## Ig Type

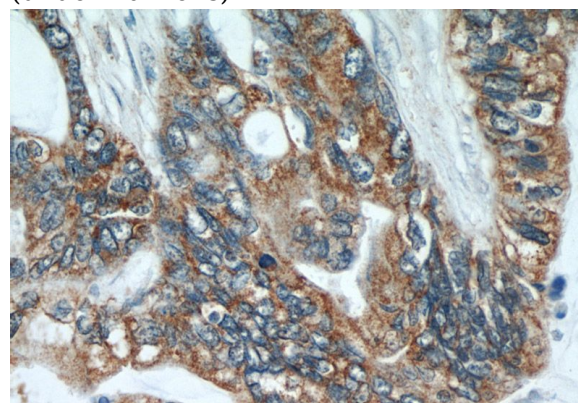
Rabbit IgG

## Applications

ELISA, IHC, WB, FC, IP

## Dilutions

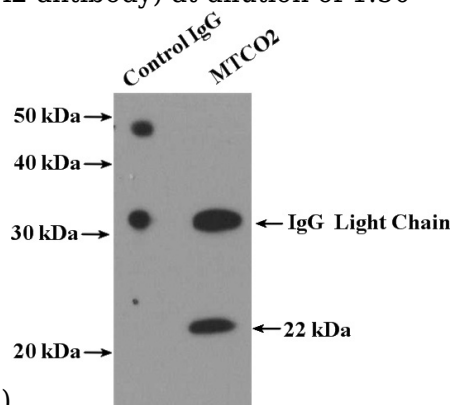
Recommended Dilution:



# MTCO2 antibody

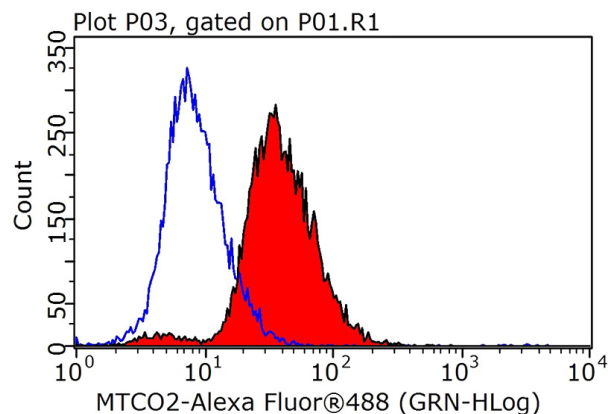
Catalog Number: 112767

Immunohistochemical of paraffin-embedded human colon cancer using Catalog No:112767(COX2 antibody) at dilution of 1:50



(under 40x lens)

IP Result of anti-COX2 (IP:Catalog No:112767, 4ug; Detection:Catalog No:112767 1:1000) with HeLa cells lysate 4000ug.



$1 \times 10^6$  HeLa cells were stained with 0.2ug COX2 antibody (Catalog No:112767, red) and control antibody (blue). Fixed with 90% MeOH blocked with 3% BSA (30 min). Alexa Fluor 488-conjugated AffiniPure Goat Anti-Rabbit IgG(H+L) with dilution 1:1000.