

MTCH2 antibody

Catalog Number: 112766

Product name

MTCH2 antibody

WB: 1:500-1:5000

IP: 1:500-1:5000

Specificity

Human, Mouse; other species not tested.

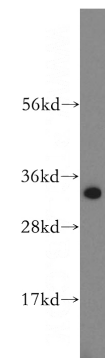
IHC: 1:20-1:200

IF: 1:10-1:100

Antibody description

MTCH2 Rabbit Polyclonal antibody. Positive WB detected in HeLa cells, HepG2 cells, mouse liver tissue. Positive IP detected in HepG2 cells. Positive IHC detected in human liver tissue. Positive IF detected in HepG2 cells, NIH/3T3 cells. Observed molecular weight by Western-blot: 33 kDa

Validations



Preparation

This antibody was obtained by immunization of MTCH2 recombinant protein (Accession Number: NM_014342). Purification method: Antigen affinity purified.

HeLa cells were subjected to SDS PAGE followed by western blot with Catalog No:112766(MTCH2 antibody) at dilution of 1:1000

Formulation

PBS with 0.02% sodium azide and 50% glycerol pH 7.3.

Storage

Store at -20°C. DO NOT ALIQUOT

Clonality

Polyclonal

Ig Type

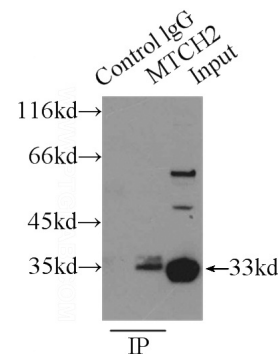
Rabbit IgG

Applications

ELISA, WB, IHC, IP, IF

Dilutions

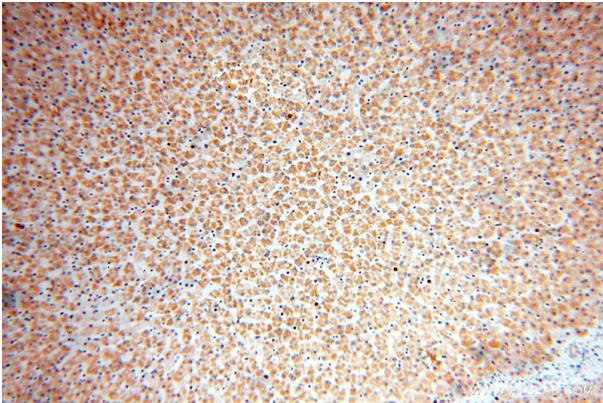
Recommended Dilution:



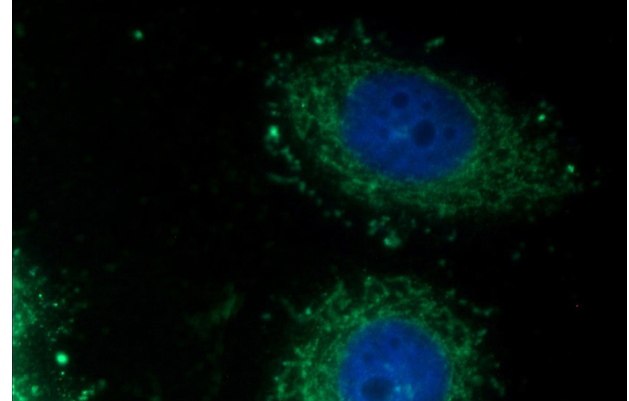
IP Result of anti-MTCH2 (IP:Catalog No:112766, 3ug; Detection:Catalog No:112766 1:1000) with HepG2 cells lysate 4000ug.

MTCH2 antibody

Catalog Number: 112766



Immunohistochemical of paraffin-embedded human liver using Catalog No:112766(MTCH2 antibody) at dilution of 1:100 (under 40x lens)



Immunofluorescent analysis of HepG2 cells using Catalog No:112766(MTCH2 Antibody) at dilution of 1:25 and Alexa Fluor 488-conjugated AffiniPure Goat Anti-Rabbit IgG(H+L)

Immunohistochemical of paraffin-embedded human liver using Catalog No:112766(MTCH2 antibody) at dilution of 1:100 (under 10x lens)

