

MPV17 antibody



Catalog Number: 112757

Product name

MPV17 antibody

WB: 1:200-1:2000

IHC: 1:20-1:200

Specificity

Human, Mouse; other species not tested.

IF: 1:10-1:100

Antibody description

MPV17 Rabbit Polyclonal antibody. Positive IHC detected in human pancreas cancer tissue. Positive IF detected in HeLa cells. Positive WB detected in mouse kidney tissue, human brain tissue, human heart tissue, human liver tissue, human placenta tissue. Observed molecular weight by Western-blot: 20kd

Preparation

This antibody was obtained by immunization of MPV17 recombinant protein (Accession Number: XM_005264326). Purification method: Antigen affinity purified.

Formulation

PBS with 0.02% sodium azide and 50% glycerol pH 7.3.

Storage

Store at -20°C. DO NOT ALIQUOT

Clonality

Polyclonal

Ig Type

Rabbit IgG

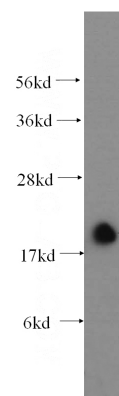
Applications

ELISA, WB, IHC, IF

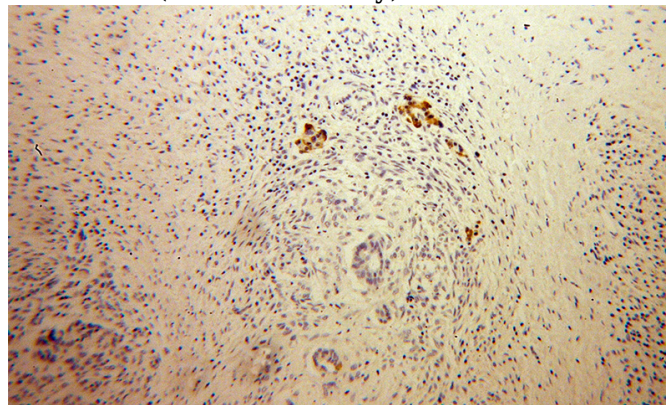
Dilutions

Recommended Dilution:

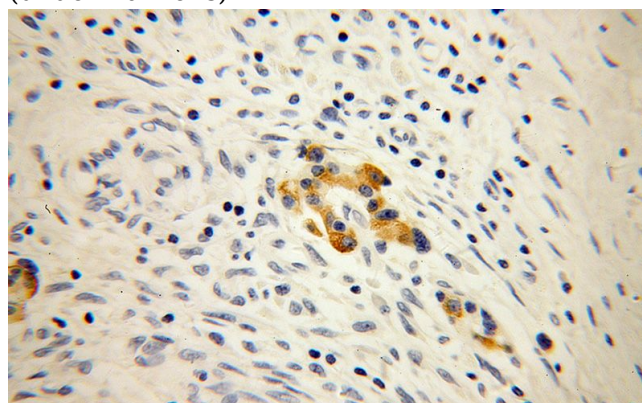
Validations



mouse kidney tissue were subjected to SDS PAGE followed by western blot with Catalog No:112757(MPV17 antibody) at dilution of 1:500



Immunohistochemical of paraffin-embedded human pancreas cancer using Catalog No:112757(MPV17 antibody) at dilution of 1:50 (under 10x lens)

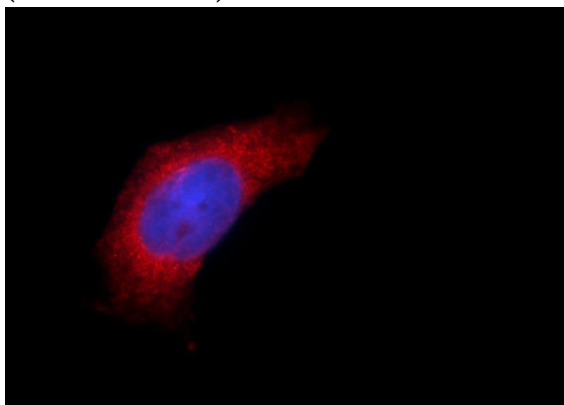


MPV17 antibody



Catalog Number: 112757

Immunohistochemical of paraffin-embedded human pancreas cancer using Catalog No:112757(MPV17 antibody) at dilution of 1:50 (under 40x lens)



Immunofluorescent analysis of HeLa cells using Catalog No:112757(MPV17 Antibody) at dilution of 1:25 and Alexa Fluor 594-conjugated AffiniPure Goat Anti-Rabbit IgG(H+L)