

# MPP8 antibody

Catalog Number: 112752

## Product name

MPP8 antibody

## Specificity

Human, Mouse, Rat; other species not tested.

## Antibody description

MPP8 Rabbit Polyclonal antibody. Positive IP detected in mouse brain tissue. Positive WB detected in mouse brain tissue, HEK-293 cells, HeLa cells, HepG2 cells, MCF7 cells, PC-3 cells. Observed molecular weight by Western-blot: 97-105 kDa

## Preparation

This antibody was obtained by immunization of MPP8 recombinant protein (Accession Number: NM\_017520). Purification method: Antigen affinity purified.

## Formulation

PBS with 0.02% sodium azide and 50% glycerol pH 7.3.

## Storage

Store at -20°C. DO NOT ALIQUOT

## Clonality

Polyclonal

## Ig Type

Rabbit IgG

## Applications

ELISA, WB, IP

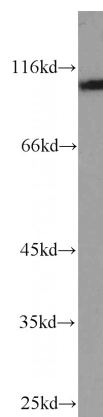
## Dilutions

Recommended Dilution:

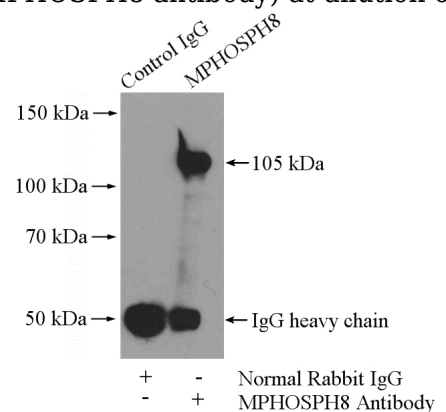
WB: 1:500-1:5000

IP: 1:500-1:5000

## Validations



mouse brain tissue were subjected to SDS PAGE followed by western blot with Catalog No:112752(MPHOSPH8 antibody) at dilution of



1:1500

IP Result of anti-MPHOSPH8 (IP:Catalog No:112752, 4ug; Detection:Catalog No:112752 1:1000) with mouse brain tissue lysate 4000ug.