

MPP7 antibody



Catalog Number: 112751

Product name

MPP7 antibody

IP: 1:200-1:2000

IHC: 1:20-1:200

Specificity

Human, Mouse, Rat; other species not tested.

Antibody description

MPP7 Rabbit Polyclonal antibody. Positive IHC detected in human ovary tumor tissue. Positive WB detected in HeLa cells, Raji cells. Positive IP detected in HeLa cells. Observed molecular weight by Western-blot: 66kd

Preparation

This antibody was obtained by immunization of MPP7 recombinant protein (Accession Number: XM_047424647). Purification method: Antigen affinity purified.

Formulation

PBS with 0.1% sodium azide and 50% glycerol pH 7.3.

Storage

Store at -20°C. DO NOT ALIQUOT

Clonality

Polyclonal

Ig Type

Rabbit IgG

Applications

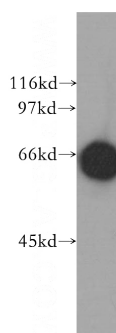
ELISA, WB, IHC, IP

Dilutions

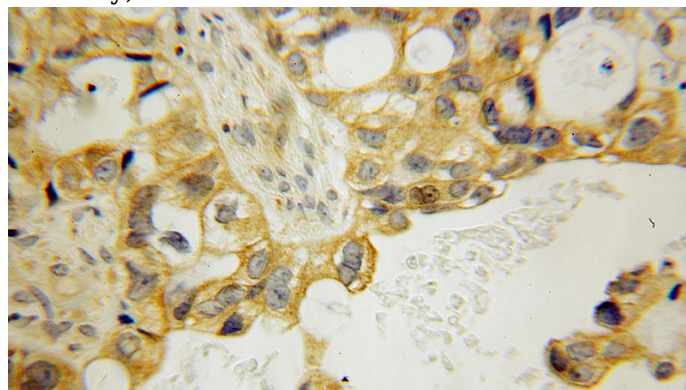
Recommended Dilution:

WB: 1:1000-1:10000

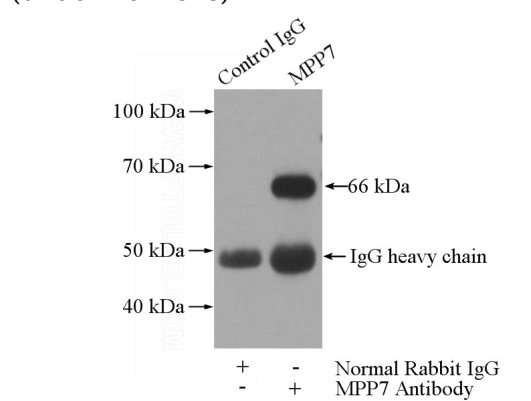
Validations



HeLa cells were subjected to SDS PAGE followed by western blot with Catalog No:112751(MPP7 antibody) at dilution of 1:500



Immunohistochemical of paraffin-embedded human ovary tumor using Catalog No:112751(MPP7 antibody) at dilution of 1:100 (under 10x lens)



IP Result of anti-MPP7 (IP:Catalog No:112751,

MPP7 antibody



Catalog Number: 112751

4ug; Detection:Catalog No:112751 1:500) with HeLa cells lysate 2800ug.