

MPP3 antibody

Catalog Number: 112748

Product name

MPP3 antibody

WB: 1:500-1:5000

IHC: 1:20-1:200

Immunogen

[Human MPP3 Recombinant protein \(GST tag\)](#)

Specificity

Human, Mouse, Rat; other species not tested.

Antibody description

MPP3 Rabbit Polyclonal antibody. Positive IHC detected in human lung cancer tissue. Positive WB detected in Transfected HEK-293 cells.

Preparation

This antibody was obtained by immunization of MPP3 recombinant protein (Accession Number: XM_006721915). Purification method: Antigen affinity purified.

Formulation

PBS with 0.1% sodium azide and 50% glycerol pH 7.3.

Storage

Store at -20°C. DO NOT ALIQUOT

Clonality

Polyclonal

Ig Type

Rabbit IgG

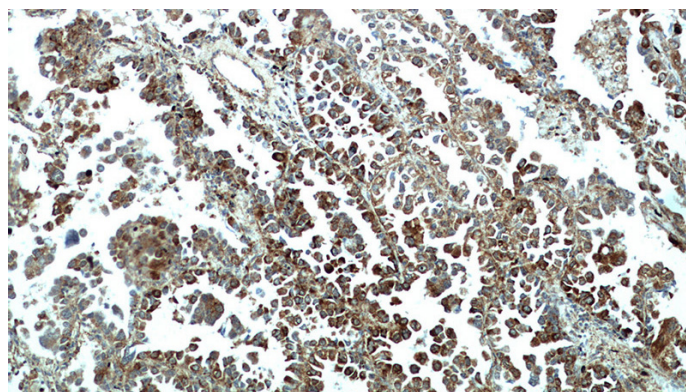
Applications

ELISA, IHC, WB

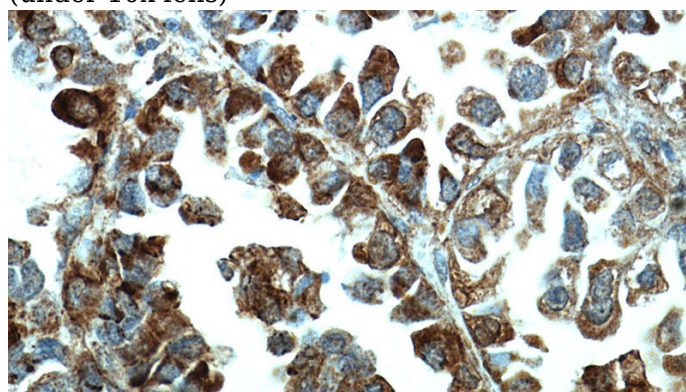
Dilutions

Recommended Dilution:

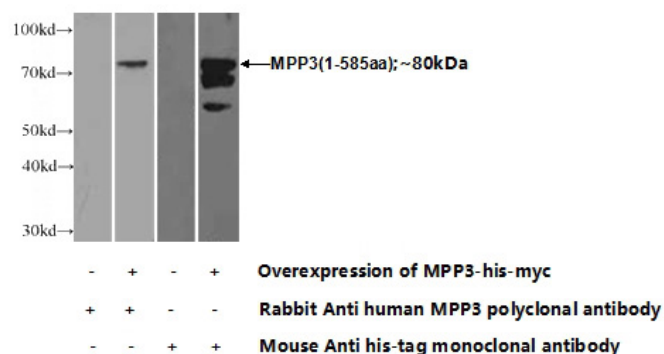
Validations



Immunohistochemical of paraffin-embedded human lung cancer using Catalog No:112748(MPP3 antibody) at dilution of 1:50 (under 10x lens)



Immunohistochemical of paraffin-embedded human lung cancer using Catalog No:112748(MPP3 antibody) at dilution of 1:50 (under 40x lens)



Transfected HEK-293 cells were subjected to SDS

MPP3 antibody



Catalog Number: 112748

PAGE followed by western blot with Catalog

No:112748(MPP3 Antibody) at dilution of 1:1000