

MPHOSPH6 antibody

Catalog Number: 112743

Product name

MPHOSPH6 antibody

Specificity

human, mouse, rat; other species not tested.

Antibody description

MPHOSPH6 Rabbit Polyclonal antibody. Positive WB detected in MCF7 cells, HeLa cells. Positive IHC detected in human breast cancer. Observed molecular weight by Western-blot: 19kd

Preparation

This antibody was obtained by immunization of MPHOSPH6 recombinant protein (Accession Number: NM_005792). Purification method: Antigen affinity purified.

Formulation

PBS with 0.1% sodium azide and 50% glycerol pH 7.3.

Storage

Store at -20°C. DO NOT ALIQUOT

Clonality

Polyclonal

Ig Type

Rabbit IgG

Applications

ELISA, WB, IHC

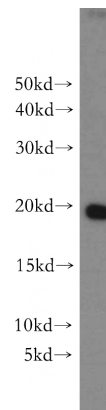
Dilutions

Recommended Dilution:

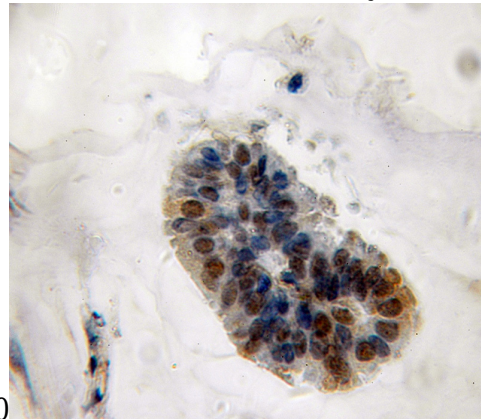
WB: 1:200-1:1000

IHC: 1:20-1:200

Validations



MCF7 cells were subjected to SDS PAGE followed by western blot with Catalog No:112743(MPHOSPH6 antibody) at dilution of



1:300

Immunohistochemical of paraffin-embedded human breast cancer using Catalog No:112743(MPHOSPH6 antibody) at dilution of 1:50 (under 10x lens)