

MOF antibody

Catalog Number: 112727

Product name

MOF antibody

Specificity

Human, Mouse, Rat; other species not tested.

Antibody description

MOF Rabbit Polyclonal antibody. Positive WB detected in HeLa cells, MCF7 cells, MCF-7 cells, rat liver tissue. Positive IP detected in HeLa cells. Observed molecular weight by Western-blot: 52 kDa

Preparation

This antibody was obtained by immunization of MOF recombinant protein (Accession Number: NM_182958). Purification method: Antigen affinity purified.

Formulation

PBS with 0.02% sodium azide and 50% glycerol pH 7.3.

Storage

Store at -20°C. DO NOT ALIQUOT

Clonality

Polyclonal

Ig Type

Rabbit IgG

Applications

ELISA, WB, IP

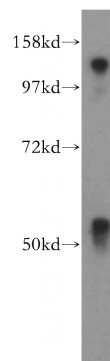
Dilutions

Recommended Dilution:

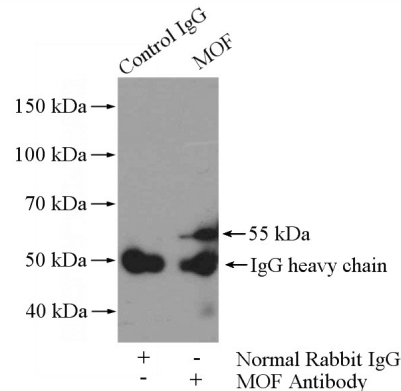
WB: 1:500-1:5000

IP: 1:200-1:2000

Validations



HeLa cells were subjected to SDS PAGE followed by western blot with Catalog No:112727(MOF antibody) at dilution of 1:500



IP Result of anti-MOF (IP:Catalog No:112727, 4ug; Detection:Catalog No:112727 1:600) with HeLa cells lysate 1200ug.