

# MOBKL1B antibody



Catalog Number: 112720

## Product name

MOBKL1B antibody

## Specificity

Human, Mouse; other species not tested.

## Antibody description

MOBKL1B Rabbit Polyclonal antibody. Positive WB detected in K-562 cells, A375 cells, mouse liver tissue, Raji cells. Observed molecular weight by Western-blot: 28 kDa

## Preparation

This antibody was obtained by immunization of MOBKL1B recombinant protein (Accession Number: NM\_018221). Purification method: Antigen affinity purified.

## Formulation

PBS with 0.02% sodium azide and 50% glycerol pH 7.3.

## Storage

Store at -20°C. DO NOT ALIQUOT

## Clonality

Polyclonal

## Ig Type

Rabbit IgG

## Applications

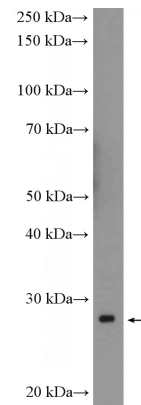
ELISA, WB

## Dilutions

Recommended Dilution:

WB: 1:200-1:2000

## Validations



K-562 cells were subjected to SDS PAGE followed by western blot with Catalog No:112720(MOBKL1B Antibody) at dilution of 1:600