

# MMP3 antibody



Catalog Number: 112706

## Product name

MMP3 antibody

WB: 1:500-1:5000

IHC: 1:20-1:200

## Specificity

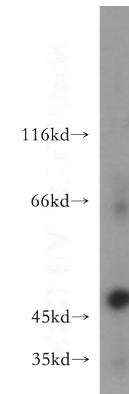
Human, Mouse, Rat; other species not tested.

IF: 1:20-1:200

## Antibody description

MMP3 Rabbit Polyclonal antibody. Positive WB detected in A549 cells, A2780 cells, HeLa cells, human skeletal muscle tissue. Positive IHC detected in human breast cancer tissue, human stomach cancer tissue. Positive IF detected in A549 cells. Observed molecular weight by Western-blot: 45-47 kDa

## Validations



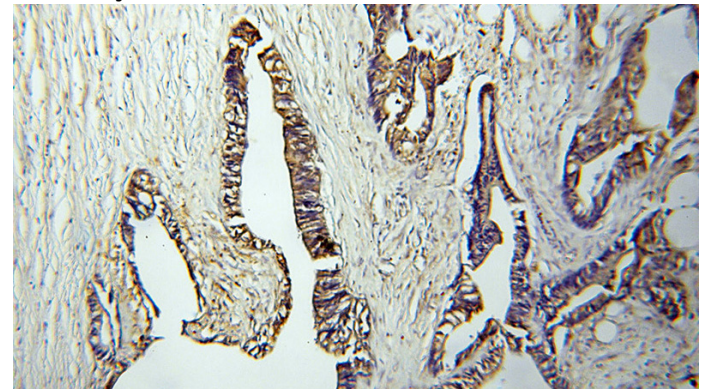
## Preparation

This antibody was obtained by immunization of MMP3 recombinant protein (Accession Number: NM\_002422). Purification method: Antigen affinity purified.

A549 cells were subjected to SDS PAGE followed by western blot with Catalog No:112706(MMP3 antibody) at dilution of 1:500

## Formulation

PBS with 0.02% sodium azide and 50% glycerol pH 7.3.



## Storage

Store at -20°C. DO NOT ALIQUOT

## Clonality

Polyclonal

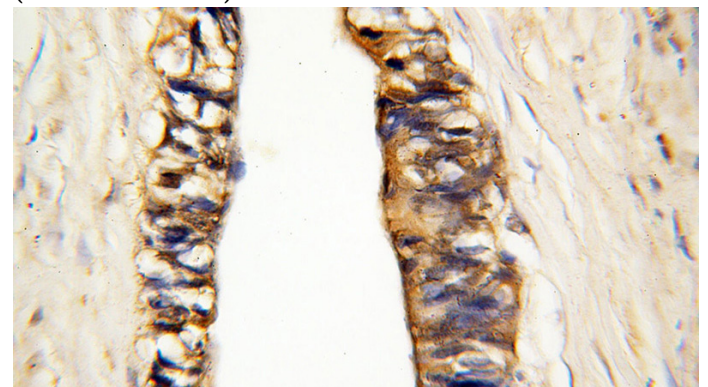
Immunohistochemical of paraffin-embedded human breast cancer using Catalog No:112706(MMP3 antibody) at dilution of 1:100 (under 10x lens)

## Ig Type

Rabbit IgG

## Applications

ELISA, WB, IHC, IF



## Dilutions

Recommended Dilution:

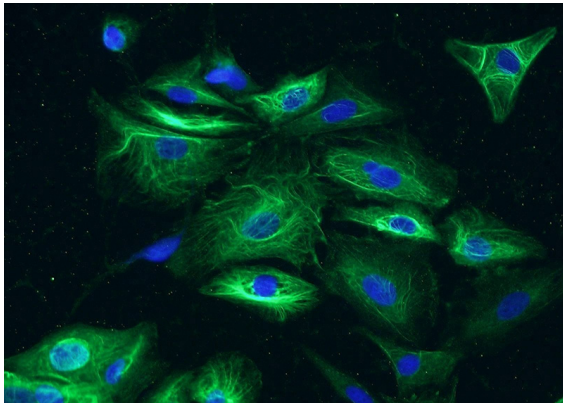
# MMP3 antibody



Catalog Number: 112706

---

Immunohistochemical of paraffin-embedded human breast cancer using Catalog No:112706(MMP3 antibody) at dilution of 1:100 (under 40x lens)



Immunofluorescent analysis of A549 cells using Catalog No:112706(MMP3 Antibody) at dilution of 1:50 and Alexa Fluor 488-conjugated AffiniPure Goat Anti-Rabbit IgG(H+L)