

# MMP21 antibody



Catalog Number: 112702

## Product name

MMP21 antibody

IHC: 1:20-1:200

IF: 1:20-1:200

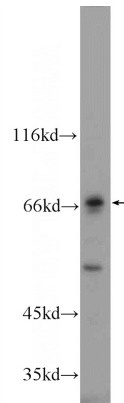
## Specificity

Human, Mouse; other species not tested.

## Validations

## Antibody description

MMP21 Rabbit Polyclonal antibody. Positive IHC detected in human skin cancer tissue, human colon cancer tissue. Positive IF detected in L02 cells. Positive WB detected in mouse liver tissue, L02 cells. Observed molecular weight by Western-blot: 67 kDa



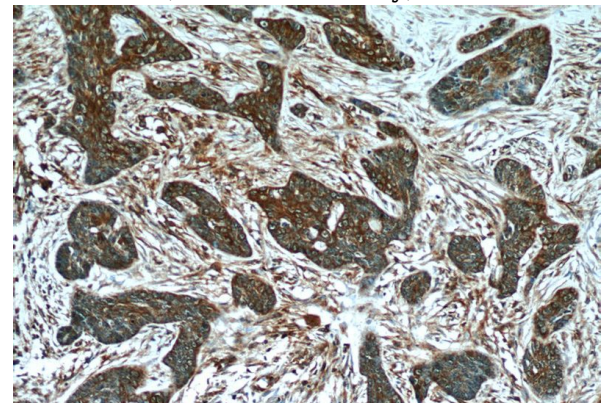
## Preparation

This antibody was obtained by immunization of Peptide (Accession Number: NM\_147191). Purification method: Antigen affinity purified.

mouse liver tissue were subjected to SDS PAGE followed by western blot with Catalog No:112702(MMP21 Antibody) at dilution of 1:600

## Formulation

PBS with 0.02% sodium azide and 50% glycerol pH 7.3.



## Storage

Store at -20°C. DO NOT ALIQUOT

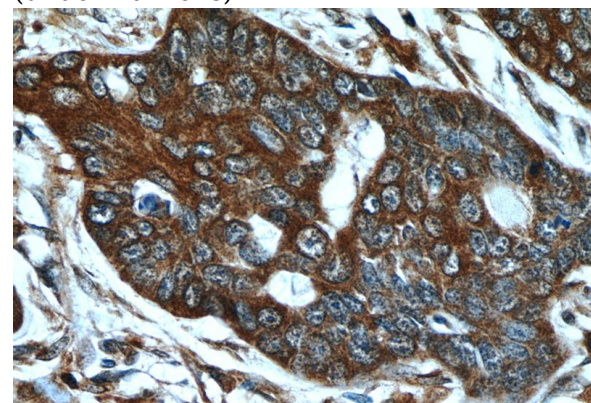
## Clonality

Polyclonal

Immunohistochemistry of paraffin-embedded human skin cancer tissue slide using Catalog No:112702(MMP21 Antibody) at dilution of 1:50 (under 10x lens)

## Ig Type

Rabbit IgG



## Applications

ELISA, WB, IHC, IF

## Dilutions

Recommended Dilution:

WB: 1:200-1:2000

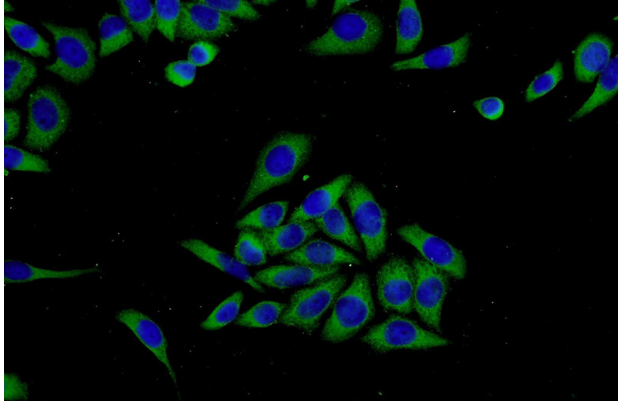
Immunohistochemistry of paraffin-embedded

# MMP21 antibody

Catalog Number: 112702

---

human skin cancer tissue slide using Catalog No:112702(MMP21 Antibody) at dilution of 1:50 (under 40x lens)



Immunofluorescent analysis of L02 cells using Catalog No:112702(MMP21 Antibody) at dilution of 1:50 and Alexa Fluor 488-conjugated AffiniPure Goat Anti-Rabbit IgG(H+L)