

MMP2 antibody

Catalog Number: 112700

Product name

MMP2 antibody

Specificity

Human, Mouse, Rat, Zebrafish; other species not tested.

Antibody description

MMP2 Rabbit Polyclonal antibody. Positive WB detected in MCF7 cells, A375 cells, A431 cells, HepG2 cells, HT-1080 cells, MDA-MB-453s cells, mouse heart tissue, mouse liver tissue, mouse lung tissue, rat heart tissue, SGC-7901 cells. Positive IP detected in NIH/3T3 cells. Positive IHC detected in human gliomas tissue, human breast cancer tissue, human heart tissue, human oesophagus tissue, human placenta tissue. Observed molecular weight by Western-blot: 72 kDa, 60 kDa

Preparation

This antibody was obtained by immunization of MMP2 recombinant protein (Accession Number: NM_004530). Purification method: Antigen affinity purified.

Formulation

PBS with 0.1% sodium azide and 50% glycerol pH 7.3.

Storage

Store at -20°C. DO NOT ALIQUOT

Clonality

Polyclonal

Ig Type

Rabbit IgG

Applications

ELISA, WB, IHC, IP

Dilutions

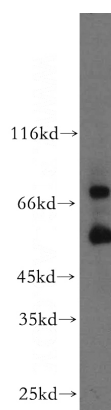
Recommended Dilution:

WB: 1:200-1:2000

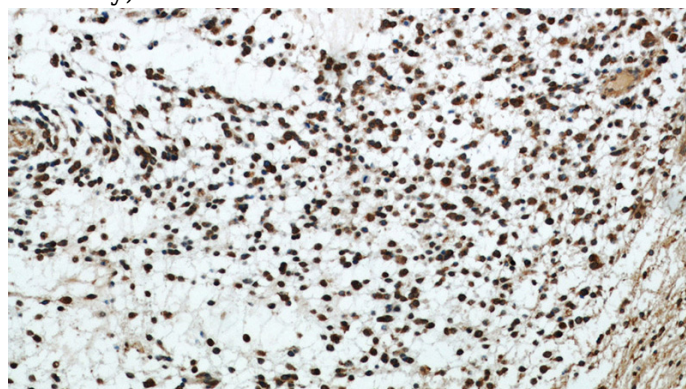
IP: 1:200-1:1000

IHC: 1:20-1:200

Validations



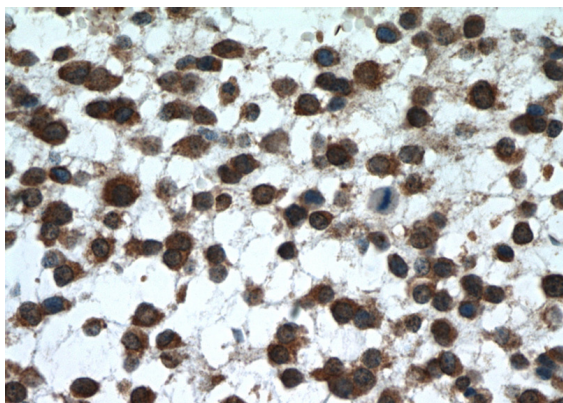
MCF7 cells were subjected to SDS PAGE followed by western blot with Catalog No:112700(MMP2 antibody) at dilution of 1:500



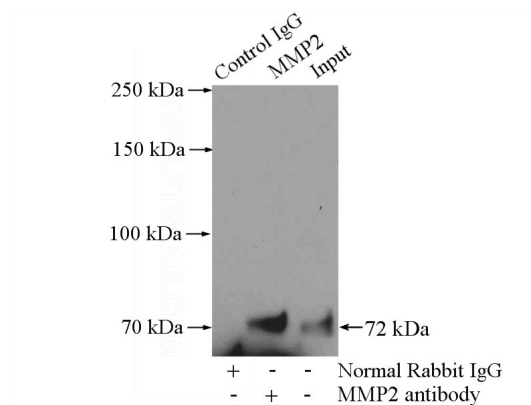
Immunohistochemical of paraffin-embedded human gliomas using Catalog No:112700(MMP2 antibody) at dilution of 1:50 (under 10x lens)

MMP2 antibody

Catalog Number: 112700



Immunohistochemical of paraffin-embedded human gliomas using Catalog No:112700(MMP2 antibody) at dilution of 1:50 (under 40x lens)



IP Result of anti-MMP2 (IP:Catalog No:112700, 4ug; Detection:Catalog No:112700 1:300) with NIH/3T3 cells lysate 1200ug.