

MMP13 antibody



Catalog Number: 112698

Product name

MMP13 antibody

Specificity

Human, Mouse, Rat, Zebrafish; other species not tested.

Antibody description

MMP13 Rabbit Polyclonal antibody. Positive WB detected in MDA-MB-453s cells, A2780 cells, MCF7 cells, zebrafish tissue. Positive IF detected in MCF-7 cells. Positive IHC detected in human breast cancer tissue, human liver cancer tissue. Observed molecular weight by Western-blot: 50-52kd

Preparation

This antibody was obtained by immunization of MMP13 recombinant protein (Accession Number: NM_002427). Purification method: Antigen affinity purified.

Formulation

PBS with 0.02% sodium azide and 50% glycerol pH 7.3.

Storage

Store at -20°C. DO NOT ALIQUOT

Clonality

Polyclonal

Ig Type

Rabbit IgG

Applications

ELISA, IHC, WB, IF

Dilutions

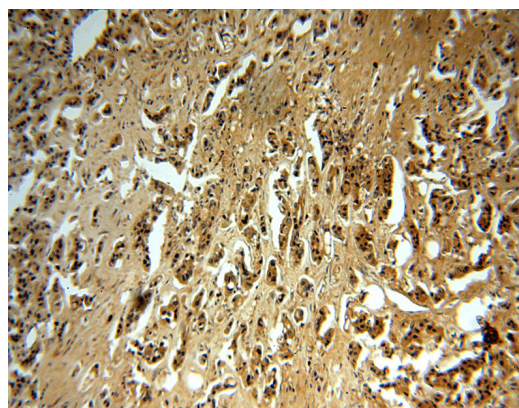
Recommended Dilution:

WB: 1:200-1:2000

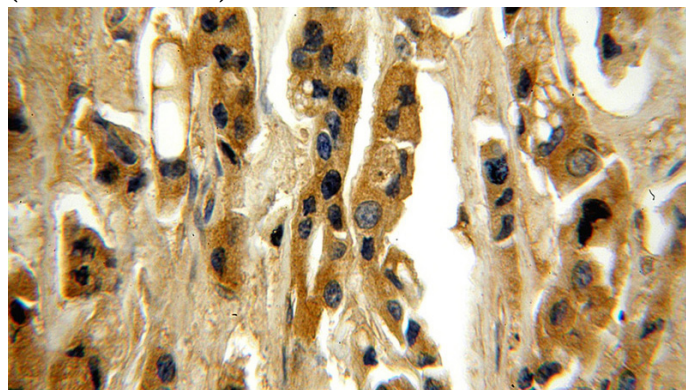
IHC: 1:20-1:200

IF: 1:10-1:100

Validations



Immunohistochemical of paraffin-embedded human breast cancer using Catalog No:112698(MMP13 antibody) at dilution of 1:50 (under 10x lens)

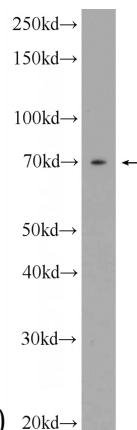


Immunohistochemical of paraffin-embedded human breast cancer using Catalog No:112698(MMP13 antibody) at dilution of 1:50

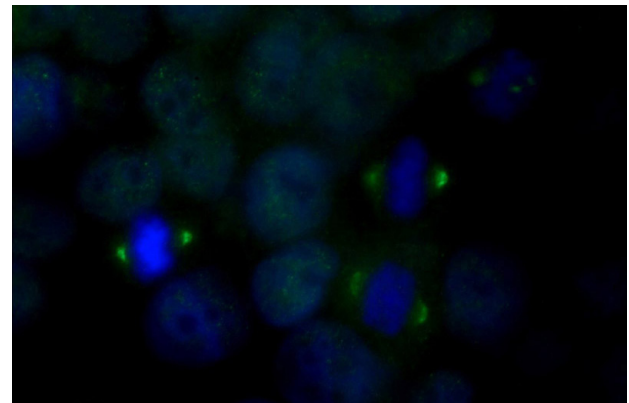
MMP13 antibody



Catalog Number: 112698



(under 40x lens)



Immunofluorescent analysis of MCF-7 cells using Catalog No:112698(MMP13 Antibody) at dilution of 1:25 and Alexa Fluor 488-conjugated AffiniPure Goat Anti-Rabbit IgG(H+L)

MDA-MB-453s cells were subjected to SDS PAGE followed by western blot with Catalog No:112698(MMP13 Antibody) at dilution of 1:600