

MMACHC antibody



Catalog Number: 112691

Product name

MMACHC antibody

Immunogen

[Human MMACHC Recombinant protein \(His tag\)](#)

Specificity

Human, Mouse, Rat; other species not tested.

Antibody description

MMACHC Rabbit Polyclonal antibody. Positive WB detected in HeLa cells, Raji cells. Observed molecular weight by Western-blot: 32 kDa

Preparation

This antibody was obtained by immunization of MMACHC recombinant protein (Accession Number: NM_001330540). Purification method: Antigen affinity purified.

Formulation

PBS with 0.02% sodium azide and 50% glycerol pH 7.3.

Storage

Store at -20°C. DO NOT ALIQUOT

Clonality

Polyclonal

Ig Type

Rabbit IgG

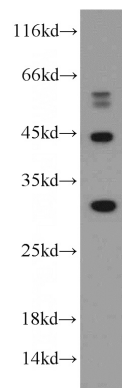
Applications

ELISA, WB

Dilutions

Recommended Dilution:
WB: 1:200-1:2000

Validations



HeLa cells were subjected to SDS PAGE followed by western blot with Catalog No:112691(MMACHC antibody) at dilution of 1:300