

# MMAB antibody

Catalog Number: 112690

## Product name

MMAB antibody

IP: 1:200-1:2000

IHC: 1:20-1:200

## Specificity

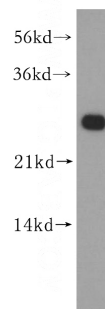
Human, Mouse; other species not tested.

IF: 1:50-1:500

## Antibody description

MMAB Rabbit Polyclonal antibody. Positive IF detected in HeLa cells. Positive IHC detected in human ovary tumor tissue. Positive IP detected in HeLa cells. Positive WB detected in HeLa cells, BxPC-3 cells, HepG2 cells, L02 cells. Observed molecular weight by Western-blot: 27 kDa

## Validations



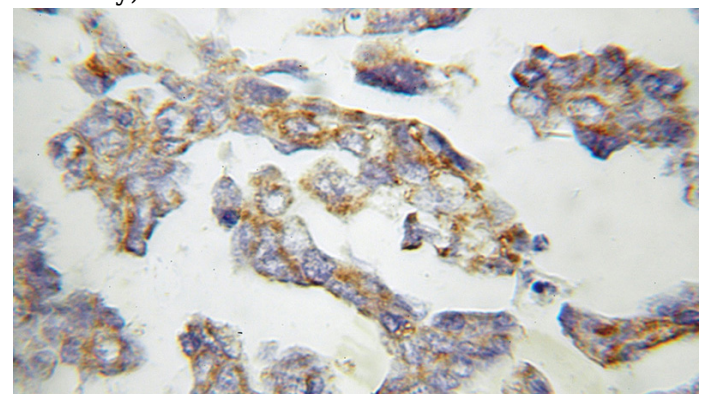
## Preparation

This antibody was obtained by immunization of MMAB recombinant protein (Accession Number: NM\_052845). Purification method: Antigen affinity purified.

HeLa cells were subjected to SDS PAGE followed by western blot with Catalog No:112690(MMAB antibody) at dilution of 1:300

## Formulation

PBS with 0.1% sodium azide and 50% glycerol pH 7.3.



## Storage

Store at -20°C. DO NOT ALIQUOT

## Clonality

Polyclonal

## Ig Type

Rabbit IgG

## Applications

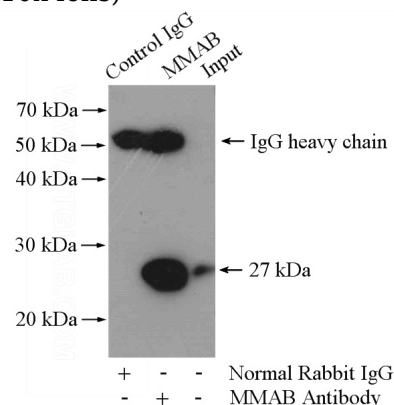
ELISA, WB, IHC, IP, IF

## Dilutions

Recommended Dilution:

WB: 1:200-1:2000

Immunohistochemical of paraffin-embedded human ovary tumor using Catalog No:112690(MMAB antibody) at dilution of 1:50 (under 10x lens)

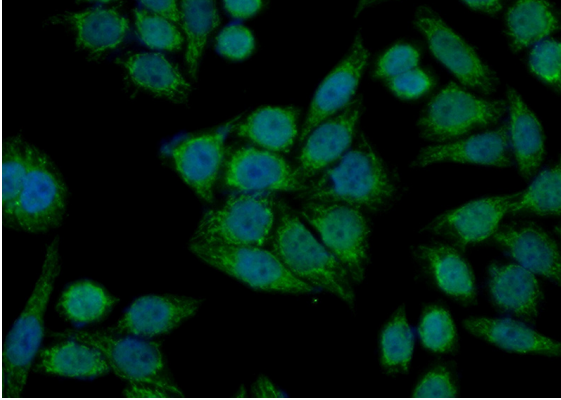


# MMAB antibody

Catalog Number: 112690

---

IP Result of anti-MMAB (IP:Catalog No:112690, 4ug; Detection:Catalog No:112690 1:500) with HeLa cells lysate 1200ug.



Immunofluorescent analysis of (10% Formaldehyde) fixed HeLa cells using Catalog No:112690(MMAB Antibody) at dilution of 1:50 and Alexa Fluor 488-conjugated AffiniPure Goat Anti-Rabbit IgG(H+L)