

MLXIPL antibody



Catalog Number: 112688

Product name

MLXIPL antibody

Specificity

Human; other species not tested.

Antibody description

MLXIPL Rabbit Polyclonal antibody. Positive WB detected in HepG2 cells, HeLa cells, human liver tissue. Positive IP detected in HepG2 cells. Observed molecular weight by Western-blot: 65 kDa

Preparation

This antibody was obtained by immunization of MLXIPL recombinant protein (Accession Number: BC012925). Purification method: Antigen affinity purified.

Formulation

PBS with 0.02% sodium azide and 50% glycerol pH 7.3.

Storage

Store at -20°C. DO NOT ALIQUOT

Clonality

Polyclonal

Ig Type

Rabbit IgG

Applications

ELISA, WB, IP

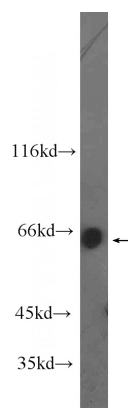
Dilutions

Recommended Dilution:

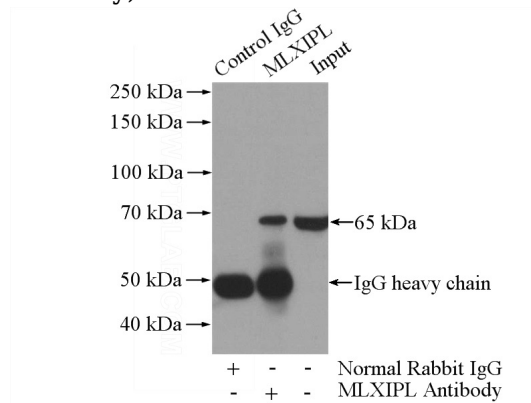
WB: 1:500-1:5000

IP: 1:500-1:5000

Validations



HepG2 cells were subjected to SDS PAGE followed by western blot with Catalog No:112688(MLXIPL antibody) at dilution of 1:1000



IP Result of anti-MLXIPL (IP:Catalog No:112688, 4ug; Detection:Catalog No:112688 1:1000) with HepG2 cells lysate 3600ug.