

MLK2 antibody



Catalog Number: 112678

Product name

MLK2 antibody

Specificity

Human; other species not tested.

Antibody description

MLK2 Rabbit Polyclonal antibody. Positive WB detected in human skeletal muscle tissue, human brain tissue. Positive IHC detected in human pancreas cancer tissue. Observed molecular weight by Western-blot: 104-115kd

Preparation

This antibody was obtained by immunization of Peptide (Accession Number: NM_002446). Purification method: Antigen affinity purified.

Formulation

PBS with 0.02% sodium azide and 50% glycerol pH 7.3.

Storage

Store at -20°C. DO NOT ALIQUOT

Clonality

Polyclonal

Ig Type

Rabbit IgG

Applications

ELISA, WB, IHC

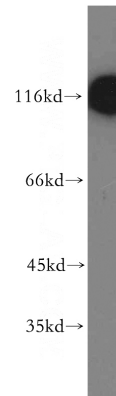
Dilutions

Recommended Dilution:

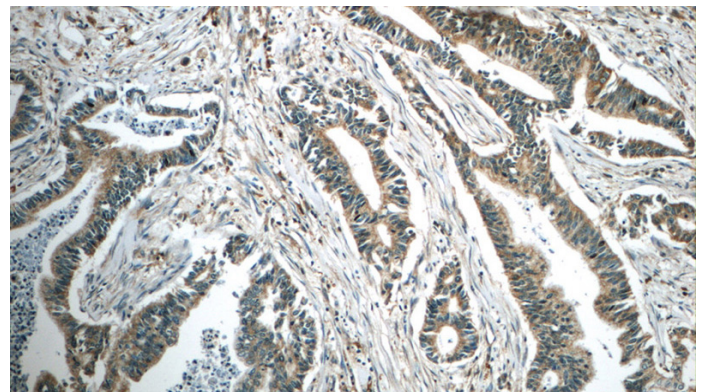
WB: 1:500-1:5000

IHC: 1:20-1:200

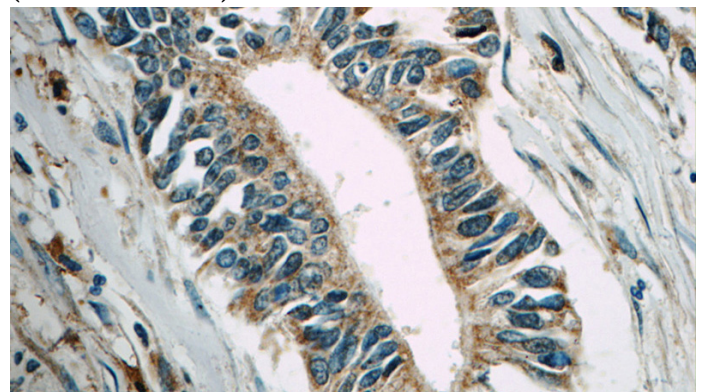
Validations



human skeletal muscle tissue were subjected to SDS PAGE followed by western blot with Catalog No:112678(MAP3K10 antibody) at dilution of 1:300



Immunohistochemistry of paraffin-embedded human pancreas cancer tissue slide using Catalog No:112678(MAP3K10 Antibody) at dilution of 1:50 (under 10x lens)



Immunohistochemistry of paraffin-embedded human pancreas cancer tissue slide using Catalog No:112678(MAP3K10 Antibody) at dilution of 1:50 (under 40x lens)