

MLF1 antibody

Catalog Number: 112673

Product name

MLF1 antibody

IP: 1:200-1:2000

IHC: 1:20-1:200

Specificity

Human, Mouse; other species not tested.

Antibody description

MLF1 Rabbit Polyclonal antibody. Positive WB detected in mouse heart tissue, human brain tissue. Positive IP detected in mouse heart tissue. Positive IHC detected in human colon cancer tissue. Observed molecular weight by Western-blot: 31 kDa

Preparation

This antibody was obtained by immunization of MLF1 recombinant protein (Accession Number: NM_022443). Purification method: Antigen affinity purified.

Formulation

PBS with 0.1% sodium azide and 50% glycerol pH 7.3.

Storage

Store at -20°C. DO NOT ALIQUOT

Clonality

Polyclonal

Ig Type

Rabbit IgG

Applications

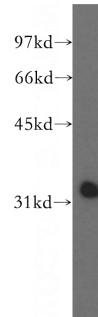
ELISA, WB, IHC, IP

Dilutions

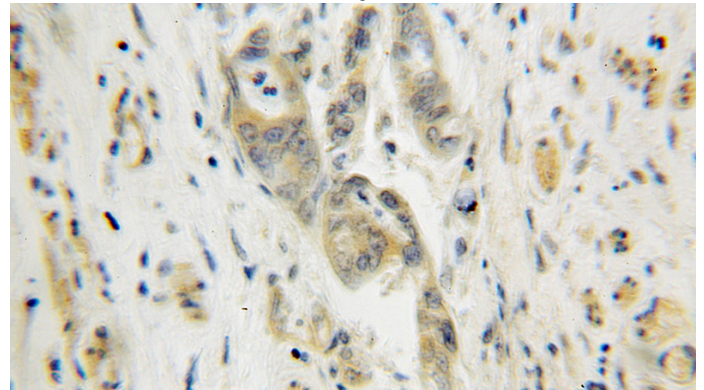
Recommended Dilution:

WB: 1:500-1:5000

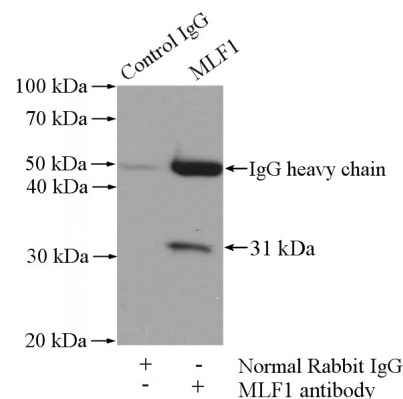
Validations



mouse heart tissue were subjected to SDS PAGE followed by western blot with Catalog No:112673(MLF1 antibody) at dilution of 1:500



Immunohistochemical of paraffin-embedded human colon cancer using Catalog No:112673(MLF1 antibody) at dilution of 1:100 (under 10x lens)



IP Result of anti-MLF1 (IP:Catalog No:112673,

MLF1 antibody



Catalog Number: 112673

4ug; Detection:Catalog No:112673 1:500) with mouse heart tissue lysate 4000ug.