

# MKS1 antibody



Catalog Number: 112670

## Product name

MKS1 antibody

Recommended Dilution:

WB: 1:500-1:5000

## Specificity

Human, Mouse, Rat; other species not tested.

IP: 1:500-1:5000

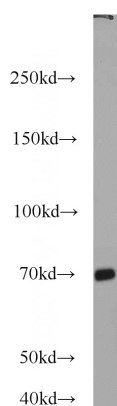
IHC: 1:20-1:200

## Antibody description

MKS1 Rabbit Polyclonal antibody. Positive IF detected in hTERT-RPE1 cells and Mouse embryonic fibroblasts. Positive IHC detected in human liver cancer tissue, human ovary tissue. Positive WB detected in mouse brain tissue, HEK-293 cells, HeLa cells, mouse uterus tissue, SH-SY5Y cells. Positive IP detected in HEK-293 cells. Observed molecular weight by Western-blot: 65-70 kDa

IF: 1:20-1:200

## Validations



## Preparation

This antibody was obtained by immunization of MKS1 recombinant protein (Accession Number: BC010061). Purification method: Antigen affinity purified.

mouse brain tissue were subjected to SDS PAGE followed by western blot with Catalog No:112670(BBS13 antibody) at dilution of 1:1000

## Formulation

PBS with 0.02% sodium azide and 50% glycerol pH 7.3.

## Storage

Store at -20°C. DO NOT ALIQUOT

## Clonality

Polyclonal

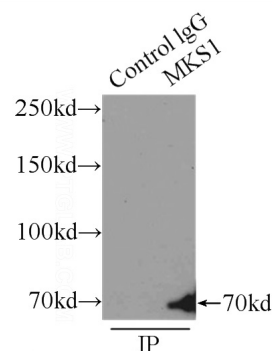
## Ig Type

Rabbit IgG

## Applications

ELISA, WB, IHC, IF, IP

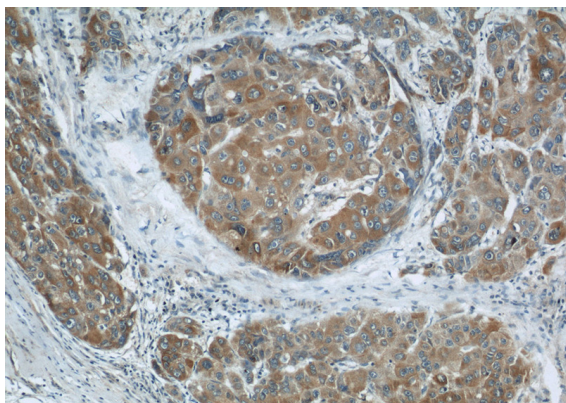
## Dilutions



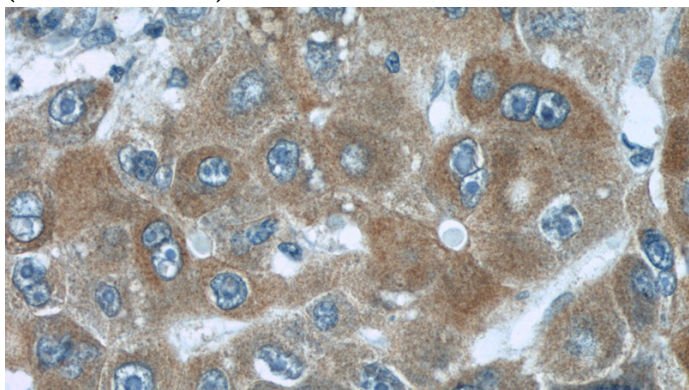
IP Result of anti-BBS13 (IP:Catalog No:112670, 3ug; Detection:Catalog No:112670 1:1000) with HEK-293 cells lysate 4500ug.

# MKS1 antibody

Catalog Number: 112670



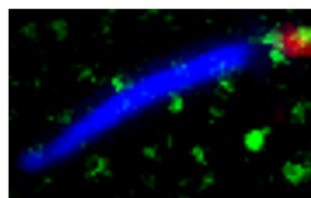
Immunohistochemical of paraffin-embedded human liver cancer using Catalog No:112670(BBS13 antibody) at dilution of 1:50 (under 10x lens)



Immunohistochemical of paraffin-embedded human liver cancer using Catalog No:112670(BBS13 antibody) at dilution of 1:50 (under 40x lens)

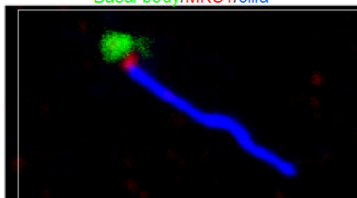
MKS1 marks the transition zone

Basal body/MKS1/cilia



Human hTERT-RPE1 Cells

Basal body/MKS1/cilia



Mouse Embryonic Fibroblasts

IF result from Dr. Corbit, Kevin. anti-MKS1(Catalog No:112670) marks the transition zone of Human hTERT-RPE1 cells and Mouse embryonic fibroblasts.