

MKL1 antibody



Catalog Number: 112666

Product name

MKL1 antibody

IHC: 1:20-1:200

IF: 1:20-1:200

Specificity

Human; other species not tested.

Antibody description

MKL1 Rabbit Polyclonal antibody. Positive IF detected in HeLa cells. Positive IHC detected in human tonsillitis tissue, human liver cancer tissue, human small intestine tissue. Positive WB detected in HepG2 cells, HeLa cells. Observed molecular weight by Western-blot: 145 kDa

Preparation

This antibody was obtained by immunization of MKL1 recombinant protein (Accession Number: BC115039). Purification method: Antigen affinity purified.

Formulation

PBS with 0.02% sodium azide and 50% glycerol pH 7.3.

Storage

Store at -20°C. DO NOT ALIQUOT

Clonality

Polyclonal

Ig Type

Rabbit IgG

Applications

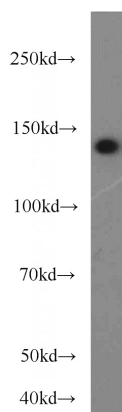
ELISA, WB, IHC, IF

Dilutions

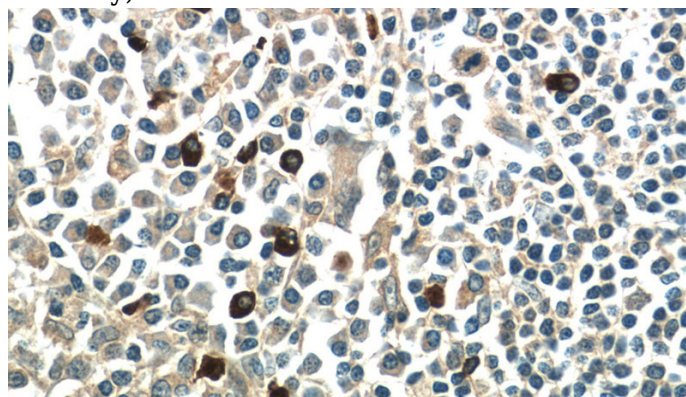
Recommended Dilution:

WB: 1:1000-1:10000

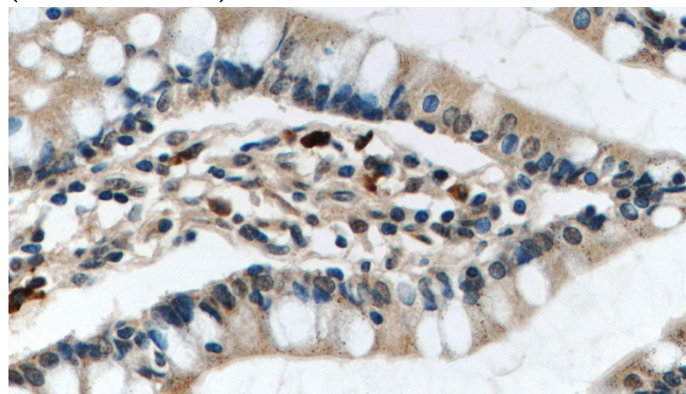
Validations



HepG2 cells were subjected to SDS PAGE followed by western blot with Catalog No:112666(MKL1 antibody) at dilution of 1:3000



Immunohistochemistry of paraffin-embedded human tonsillitis tissue slide using Catalog No:112666(MKL1 Antibody) at dilution of 1:50 (under 40x lens)



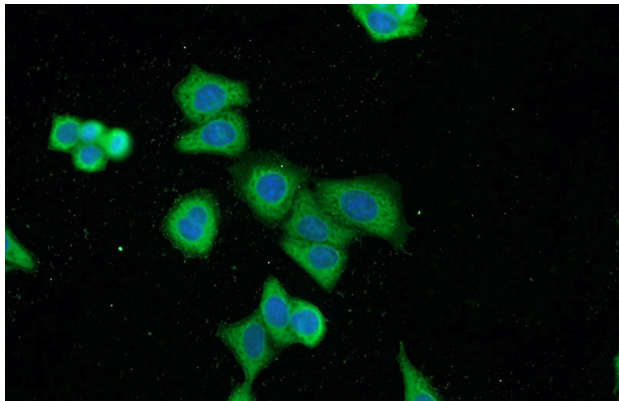
Immunohistochemistry of paraffin-embedded

MKL1 antibody



Catalog Number: 112666

human small intestine tissue slide using Catalog No:112666(MKL1 Antibody) at dilution of 1:50 (under 40x lens)



Immunofluorescent analysis of HeLa cells using Catalog No:112666(MKL1 Antibody) at dilution of 1:50 and Alexa Fluor 488-conjugated AffiniPure Goat Anti-Rabbit IgG(H+L)