

MITF antibody



Catalog Number: 112661

Product name

MITF antibody

Specificity

Human, Mouse, Rat; other species not tested.

Antibody description

MITF Rabbit Polyclonal antibody. Positive IP detected in mouse heart tissue. Positive WB detected in Jurkat cells, HeLa cells, mouse heart tissue, rat skin tissue. Positive FC detected in hESC cells. Observed molecular weight by Western-blot: 60-65kd

Preparation

This antibody was obtained by immunization of MITF recombinant protein (Accession Number: BC012503). Purification method: Antigen affinity purified.

Formulation

PBS with 0.02% sodium azide and 50% glycerol pH 7.3.

Storage

Store at -20°C. DO NOT ALIQUOT

Clonality

Polyclonal

Ig Type

Rabbit IgG

Applications

ELISA, WB, FC, IP

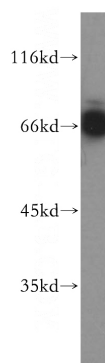
Dilutions

Recommended Dilution:

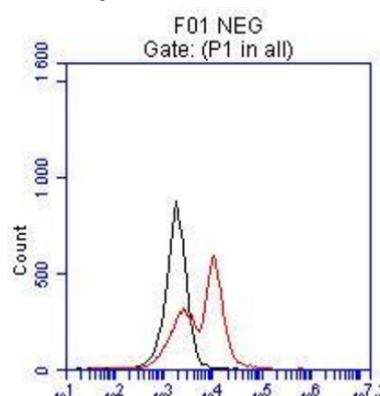
WB: 1:1000-1:10000

IP: 1:500-1:5000

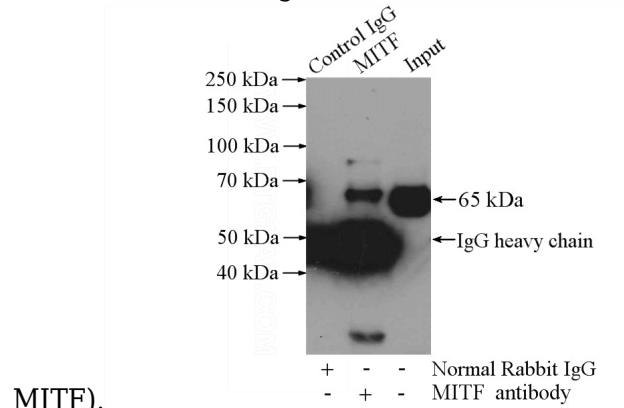
Validations



Jurkat cells were subjected to SDS PAGE followed by western blot with Catalog No:112661(MITF antibody) at dilution of 1:400



FC result of anti-MITF (Catalog No:112661, 1:50) with hESC which spontaneous differentiation toward retinal lineage (RPE). (Black: control; Red



MITF).

IP Result of anti-MITF (IP:Catalog No:112661, 4ug; Detection:Catalog No:112661 1:1000) with mouse heart tissue lysate 4000ug.