

MEPCE antibody

Catalog Number: 112656

Product name

MEPCE antibody

IP: 1:200-1:1000

IF: 1:20-1:200

Specificity

Human, Mouse, Rat; other species not tested.

Antibody description

MEPCE Rabbit Polyclonal antibody. Positive IF detected in MCF-7 cells. Positive WB detected in MCF7 cells. Positive IP detected in MCF-7 cells. Observed molecular weight by Western-blot: 74 kDa

Preparation

This antibody was obtained by immunization of MEPCE recombinant protein (Accession Number: NM_019606). Purification method: Antigen affinity purified.

Formulation

PBS with 0.02% sodium azide and 50% glycerol pH 7.3.

Storage

Store at -20°C. DO NOT ALIQUOT

Clonality

Polyclonal

Ig Type

Rabbit IgG

Applications

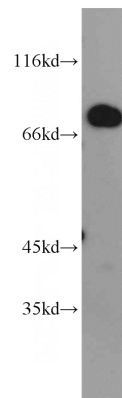
ELISA, WB, IF, IP

Dilutions

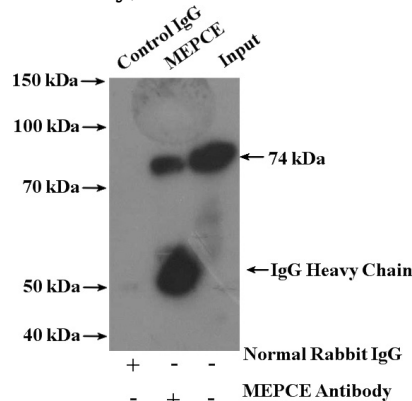
Recommended Dilution:

WB: 1:1000-1:10000

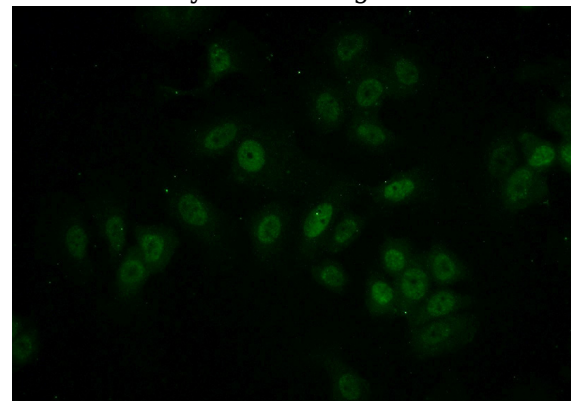
Validations



MCF7 cells were subjected to SDS PAGE followed by western blot with Catalog No:112656(MEPCE antibody) at dilution of 1:2000



IP Result of anti-MEPCE (IP:Catalog No:112656, 4ug; Detection:Catalog No:112656 1:400) with MCF-7 cells lysate 3200ug.



Immunofluorescent analysis of (-20oc Ethanol) fixed MCF-7 cells using Catalog

MEPCE antibody



Catalog Number: 112656

No:112656(MEPCE Antibody) at dilution of 1:50

and Alexa Fluor 488-conjugated AffiniPure Goat
Anti-Rabbit IgG(H+L)