

# MEK2 antibody

Catalog Number: 112643

## Product name

MEK2 antibody

IP: 1:500-1:5000

IF: 1:10-1:100

## Specificity

Human, Mouse, Rat; other species not tested.

## Antibody description

MEK2 Rabbit Polyclonal antibody. Positive IP detected in HL-60 cells. Positive WB detected in HL-60 cells, human brain tissue, Jurkat cells, SH-SY5Y cells. Positive IF detected in SH-SY5Y cells. Observed molecular weight by Western-blot: 44-47 kDa

## Preparation

This antibody was obtained by immunization of MEK2 recombinant protein (Accession Number: NM\_030662). Purification method: Antigen affinity purified.

## Formulation

PBS with 0.1% sodium azide and 50% glycerol pH 7.3.

## Storage

Store at -20°C. DO NOT ALIQUOT

## Clonality

Polyclonal

## Ig Type

Rabbit IgG

## Applications

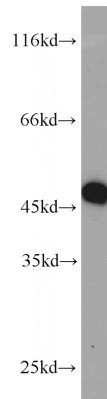
ELISA, WB, IF, IP

## Dilutions

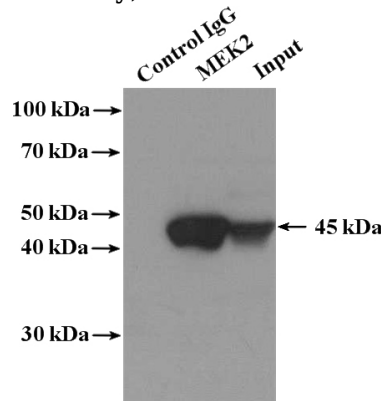
Recommended Dilution:

WB: 1:500-1:5000

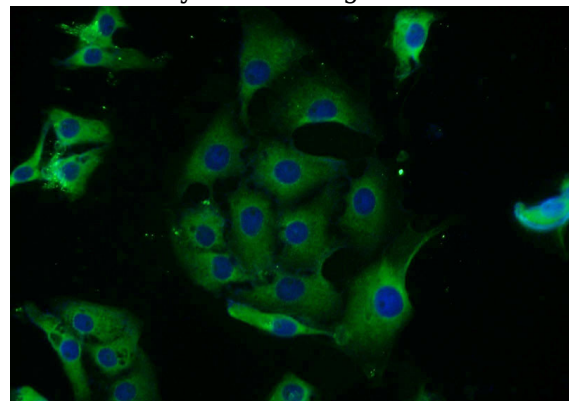
## Validations



HL-60 cells were subjected to SDS PAGE followed by western blot with Catalog No:112643(MAP2K2 antibody) at dilution of 1:1000



IP Result of anti-MAP2K2 (IP:Catalog No:112643, 4ug; Detection:Catalog No:112643 1:1000) with HL-60 cells lysate 1280ug.



Immunofluorescent analysis of SH-SY5Y cells using Catalog No:112643(MAP2K2 Antibody) at

# MEK2 antibody



Catalog Number: 112643

---

dilution of 1:25 and Alexa Fluor 488-conjugated

AffiniPure Goat Anti-Rabbit IgG(H+L)