

# MINA antibody

Catalog Number: 112622

## Product name

MINA antibody

IP: 1:200-1:2000

IHC: 1:20-1:200

## Specificity

Human, Mouse, Rat; other species not tested.

## Antibody description

MINA Rabbit Polyclonal antibody. Positive IHC detected in human pancreas cancer tissue. Positive WB detected in HEK-293 cells, A375 cells, mouse liver tissue. Positive IP detected in HEK-293 cells. Observed molecular weight by Western-blot: 53 kDa

## Preparation

This antibody was obtained by immunization of MINA recombinant protein (Accession Number: XM\_005247838). Purification method: Antigen affinity purified.

## Formulation

PBS with 0.1% sodium azide and 50% glycerol pH 7.3.

## Storage

Store at -20°C. DO NOT ALIQUOT

## Clonality

Polyclonal

## Ig Type

Rabbit IgG

## Applications

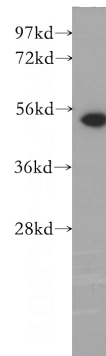
ELISA, WB, IHC, IP

## Dilutions

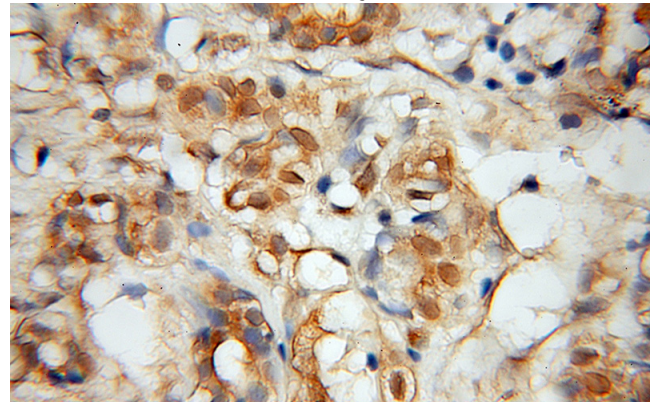
Recommended Dilution:

WB: 1:500-1:5000

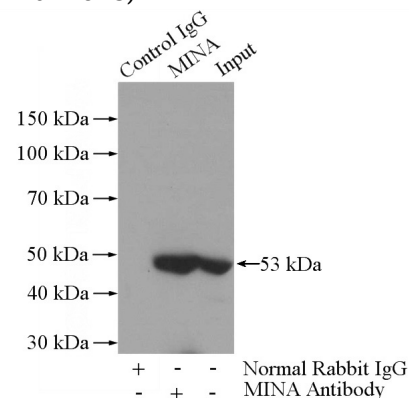
## Validations



HEK-293 cells were subjected to SDS PAGE followed by western blot with Catalog No:112622(MINA antibody) at dilution of 1:500



Immunohistochemical of paraffin-embedded human pancreas cancer using Catalog No:112622(MINA antibody) at dilution of 1:50 (under 10x lens)



IP Result of anti-MINA (IP:Catalog No:112622,

# MINA antibody



Catalog Number: 112622

---

3ug; Detection:Catalog No:112622 1:500) with HEK-293 cells lysate 2120ug.