

MIG6; ERRFI1 antibody



Catalog Number: 112621

Product name

MIG6; ERRFI1 antibody

Recommended Dilution:

WB: 1:500-1:5000

Specificity

Human, Mouse, Rat; other species not tested.

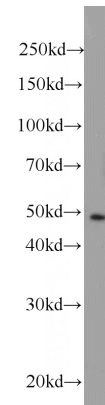
IHC: 1:20-1:200

IF: 1:20-1:200

Antibody description

MIG6; ERRFI1 Rabbit Polyclonal antibody. Positive IHC detected in human breast cancer tissue, human tonsillitis tissue. Positive IF detected in PC-3 cells. Positive WB detected in HeLa cells, human brain tissue, mouse brain tissue, rat colon tissue, Recombinant protein. Observed molecular weight by Western-blot: 51 kDa

Validations



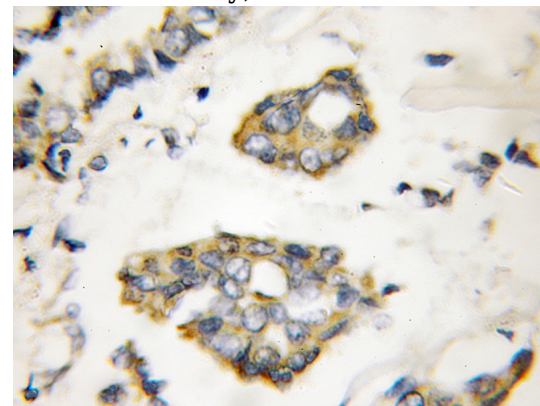
Preparation

This antibody was obtained by immunization of MIG6; ERRFI1 recombinant protein (Accession Number: NM_018948). Purification method: Antigen affinity purified.

HeLa cells were subjected to SDS PAGE followed by western blot with Catalog No:112621(MIG6; ERRFI1 antibody) at dilution of 1:1000

Formulation

PBS with 0.1% sodium azide and 50% glycerol pH 7.3.



Storage

Store at -20°C. DO NOT ALIQUOT

Clonality

Polyclonal

Ig Type

Rabbit IgG

Applications

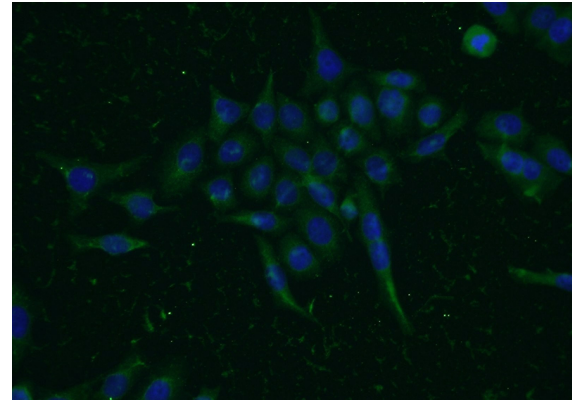
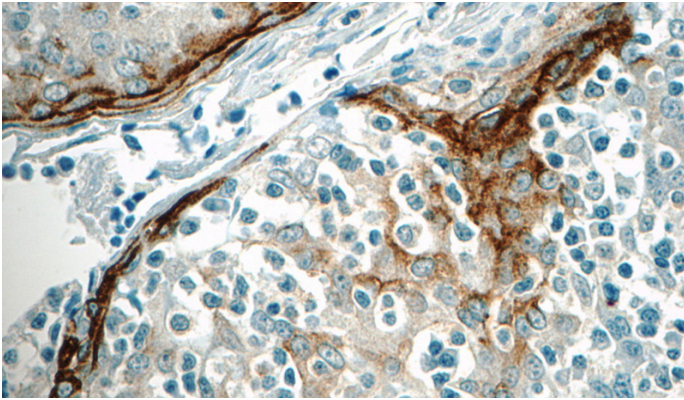
ELISA, IHC, WB, IF

Immunohistochemical of paraffin-embedded human breast cancer using Catalog No:112621(MIG6; ERRFI1 antibody) at dilution of 1:50 (under 10x lens)

Dilutions

MIG6; ERFFI1 antibody

Catalog Number: 112621



Immunohistochemistry of paraffin-embedded human tonsillitis tissue slide using Catalog No:112621(MIG6; ERFFI1 Antibody) at dilution of 1:50 (under 40x lens)

Immunofluorescent analysis of PC-3 cells using Catalog No:112621(MIG6; ERFFI1 Antibody) at dilution of 1:50 and Alexa Fluor 488-conjugated AffiniPure Goat Anti-Rabbit IgG(H+L)